

Bridger III

12586 W Bridger Street - Boise, ID
OFFICE SPACE FOR LEASE



Property Information:

Submarket: West
Available: Immediately
Bldg Type: Office
Quality: Class A
Bldg Size: 17,936 SF
Divisible: Yes
of Floors: One
Parking: 4:1000

Lease Terms:

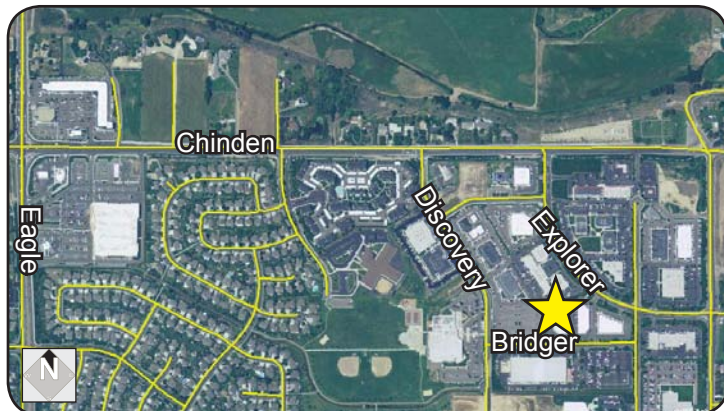
Lease Term: 3-5 years
Lease Type: NNN
TI Allowance: Negotiable

Listing Comments:

Space includes 2 roll-up doors in warehouse.
 Nice office built-out, ready for move in.
 Close to West Boise YMCA, restaurants and services.
 Easy access to Chinden Blvd., Eagle Road and I-84.
 Located in the Boise Research Center.
 Ready to occupy.

Available Space:

SPACE:	RSF:	RATE:
Suite 110	Office 3,300 SF	
	Whse 5,003 SF	
	Total: 8,303 SF	\$5.95/SF



Contact:

Patrick Shalz, SIOR
 Ph: 208.947.0834
 Fx: 208.947.0869
 pat@tokcommercial.com
 www.tokcommercial.com

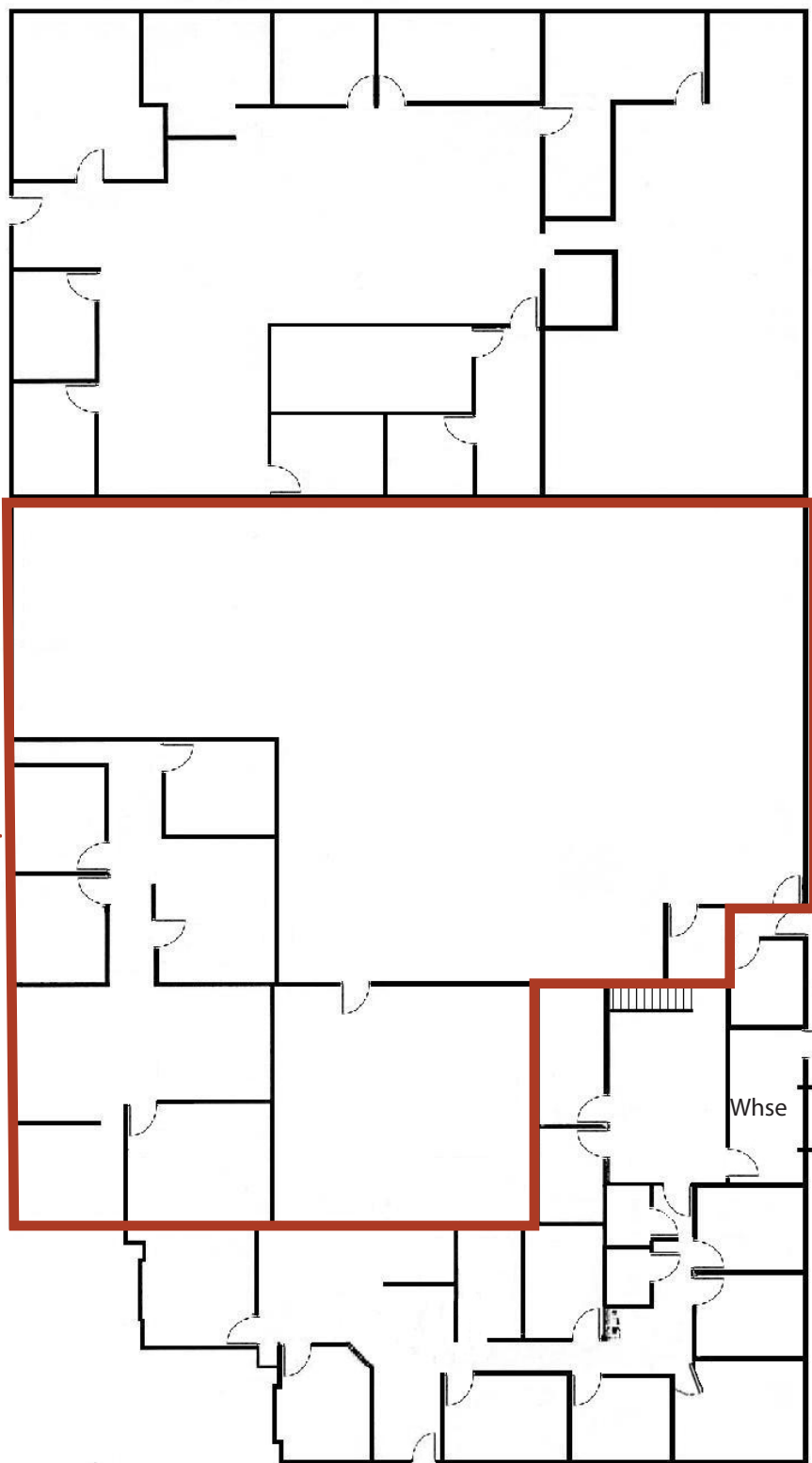
Grove T. Hummert
 Ph: 208.947.0804
 Fx: 208.947.0869
 grove@tokcommercial.com
 www.tokcommercial.com



(11/09/11) This information was obtained from sources believed reliable but cannot be guaranteed. Any opinions or estimates are used for example only.

Bridger III

12586 W Bridger Street - Boise, ID
OFFICE SPACE FOR LEASE



Suite 110
8,303 SF



Lockbox
Location

This information was obtained from sources believed reliable but cannot be guaranteed. Any opinions or estimates are used for example only.