

Benjamin Plaza

8620 W Emerald St - Boise, ID
OFFICE SPACE FOR LEASE



Property Information:

Submarket: West
Available: Immediately
Bldg Type: Office
Quality: Class A
Bldg Size: 20,509 SF
Divisible: No
of Floors: 1
Parking: 4:1000

Lease Terms:

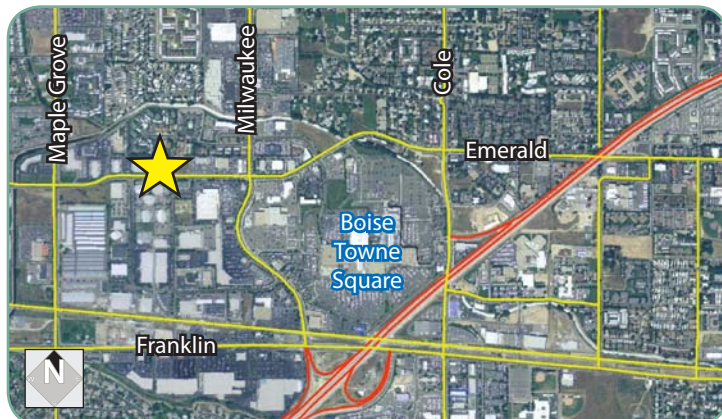
Lease Term: 2-5 years
Lease Type: Full Service
TI Allowance: Negotiable

Listing Comments:

Located in the growing West Boise Emerald corridor.
Excellent location with great exposure.
Close to restaurants, shopping, and lodging.
Easy access to I-184 and I-84 at Franklin Road.

Available Space:

SPACE:	RSF:	RATE:
Suite 100	3,557 SF	\$11.00/SF



Contact:

Patrick Shalz, SIOR
Ph: 208.947.0834
Fx: 208.947.0869
pat@tokcommercial.com
www.tokcommercial.com

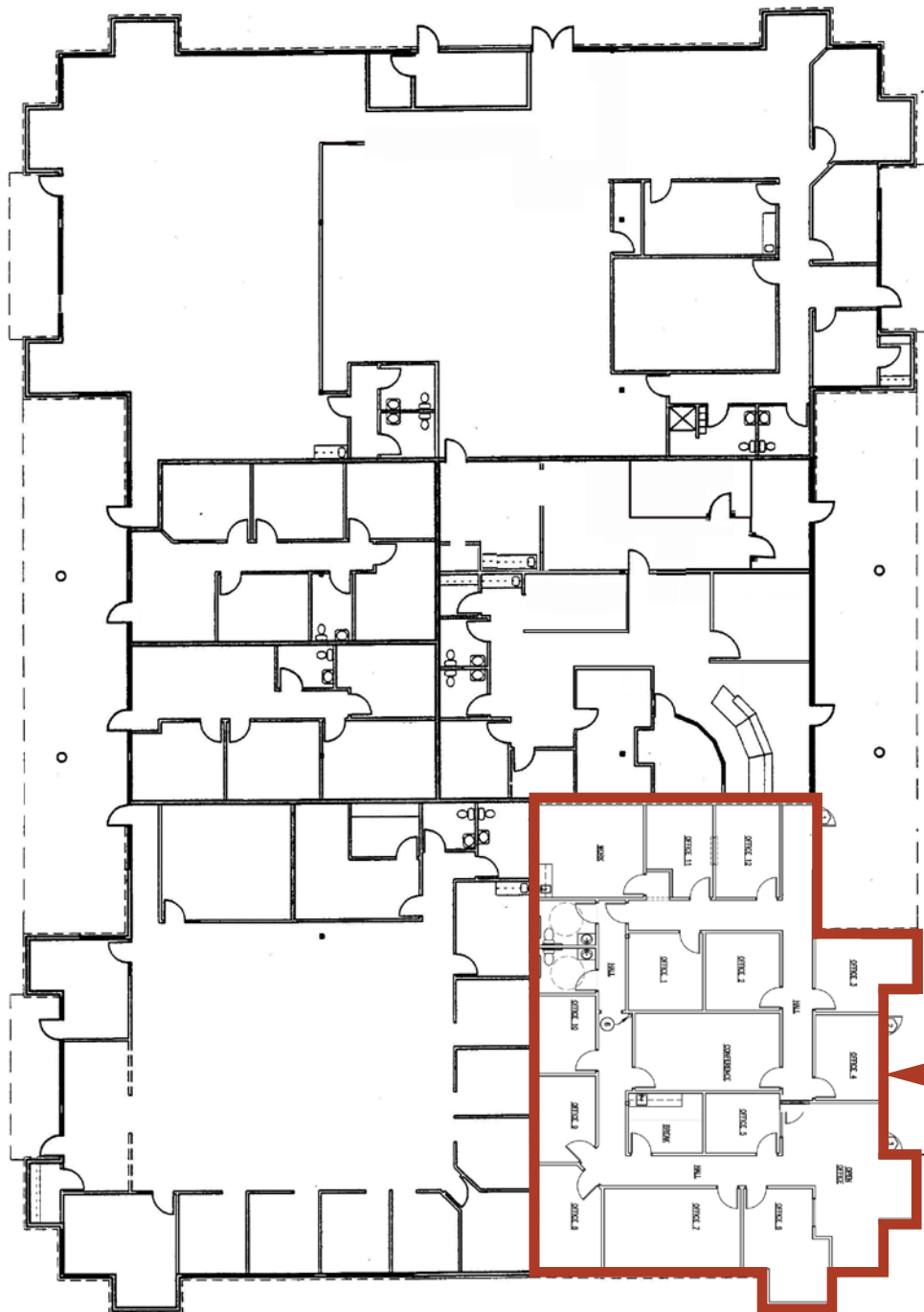
Grove T. Hummert
Ph: 208.947.0804
Fx: 208.947.0869
grove@tokcommercial.com
www.tokcommercial.com



Benjamin Plaza

8620 W Emerald St - Boise, ID

OFFICE SPACE FOR LEASE



Suite 100
3,557 SF



Lockbox location is at 8660 W. Emerald, east of Benjamin Plaza. Call for Lockbox combination.



This information was obtained from sources believed reliable but cannot be guaranteed. Any opinions or estimates are used for example only.