

Apollo Building

6148 N Discovery Way - Boise, ID
OFFICE SPACE FOR LEASE



Property Information:

Submarket: West Boise
Available: Immediately
Bldg Type: Office
Bldg Size: 21,358 SF
Parking: 4:1000
Zoning: T-1D
Power: 3 Phase

Lease Terms:

Lease Term: 3-5 years
Lease Type: FLSVEJ
TI Allowance: Negotiable

Listing Comments:

Close to coffee shops, restaurants and hotels.

Excellent tenant exposure.

Located in the Boise Research Center.

Across from the West Boise YMCA.

Easy access to major thoroughfares.

Available Space:

SPACE:	RSF:	RATE:
Suite 150	3,332 SF	\$16.50/SF



Contact:

Patrick Shalz, SIOR

Ph: 208.947.0834
Fx: 208.947.0869
pat@tokcommercial.com
www.tokcommercial.com



Grove T. Hummert

Ph: 208.947.0804
Fx: 208.947.0869
grove@tokcommercial.com
www.tokcommercial.com

Apollo Building

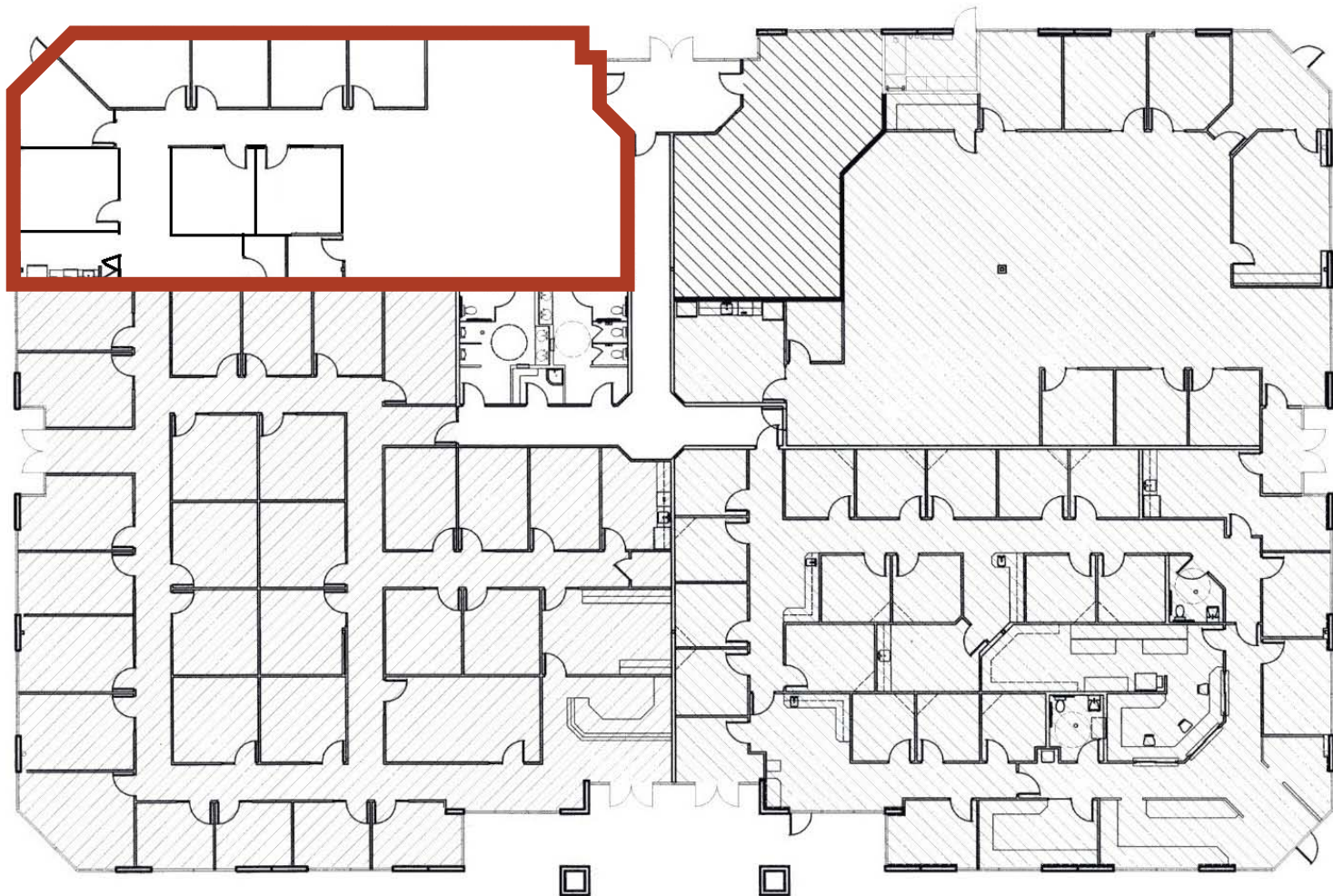
6148 N Discovery Way - Boise, ID

OFFICE SPACE FOR LEASE

Floor Plan

Suite 150

3,332 SF



This information was obtained from sources believed reliable but cannot be guaranteed. Any opinions or estimates are used for example only.