

Alpine Building

12550 W Explorer - Boise, ID
OFFICE SPACE FOR LEASE



Property Information:

Submarket: West
Available: Immediately
Bldg Type: Office
Quality: Class A
Bldg Size: 22,941 SF
Divisible: Yes
of Floors: 2
Parking: 4:1000

Lease Terms:

Lease Term: 5 years
Lease Type: FLSVEJ
TI Allowance: \$40.00

Listing Comments:

- New construction.
- Professional business campus atmosphere.
- Great access to Eagle, Meridian, Garden City & Downtown Boise.
- Walking distance to shops and restaurants.
- Exterior balconies.
- Equity ownership opportunity. Contact agent for details.

Available Space:

SPACE:	RSF:	RATE:
Suite 120 (avail 6/1/12)	3,261 SF	\$15.75/SF
Suite 140	2,425 SF	\$15.75/SF
Suite 240	1,066 SF	\$15.75/SF

Suites 120 & 140 can be combined for 5,686 SF.



Contact:

Al Marino, SIOR
 Ph: 208.947.0811
 Fx: 208.947.0869
 al@tokcommercial.com
 www.tokcommercial.com

Grove T. Hummert
 Ph: 208.947.0804
 Fx: 208.947.0869
 grove@tokcommercial.com
 www.tokcommercial.com

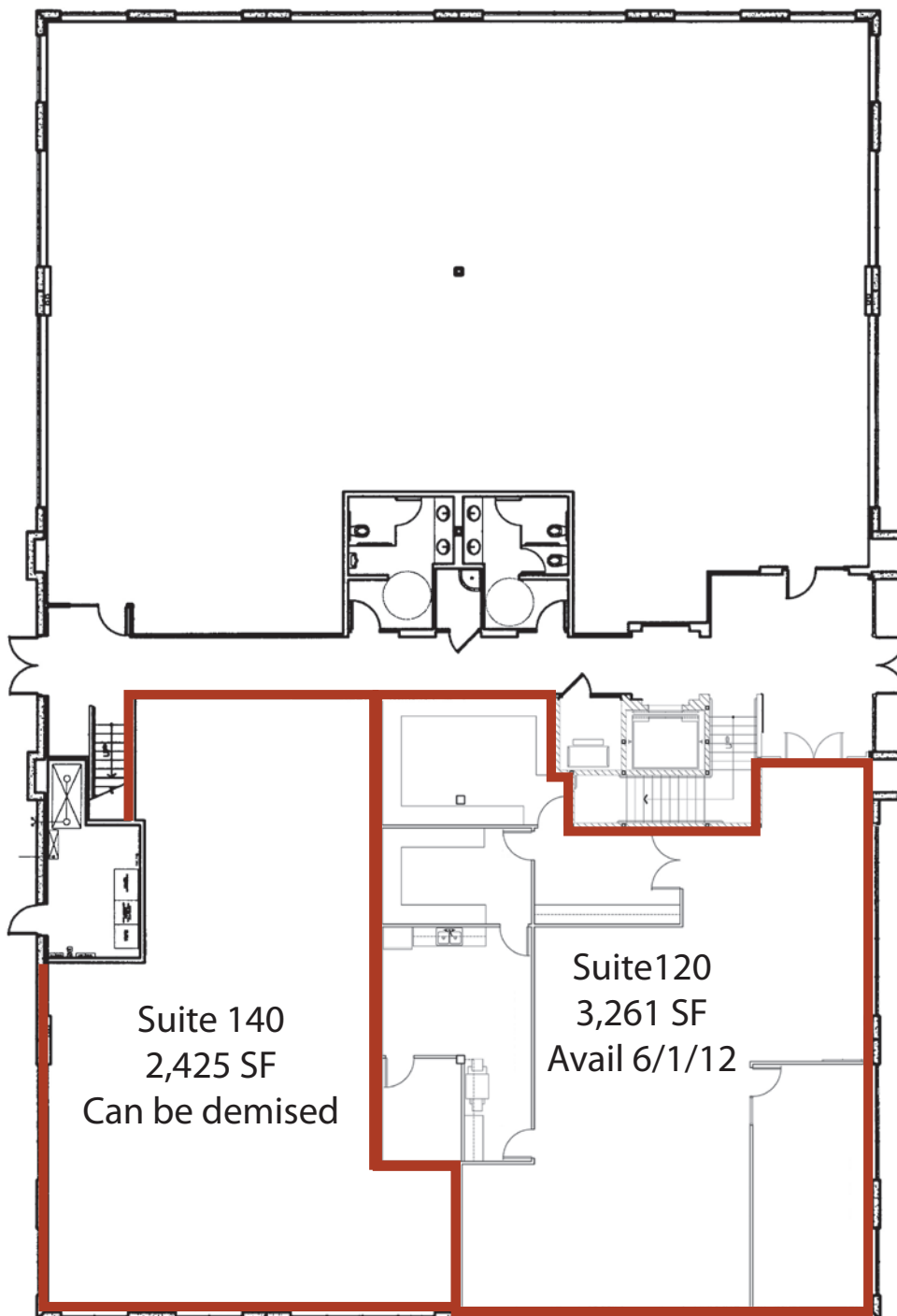


Alpine Building

12550 W Explorer - Boise, ID

OFFICE SPACE FOR LEASE

First Floor



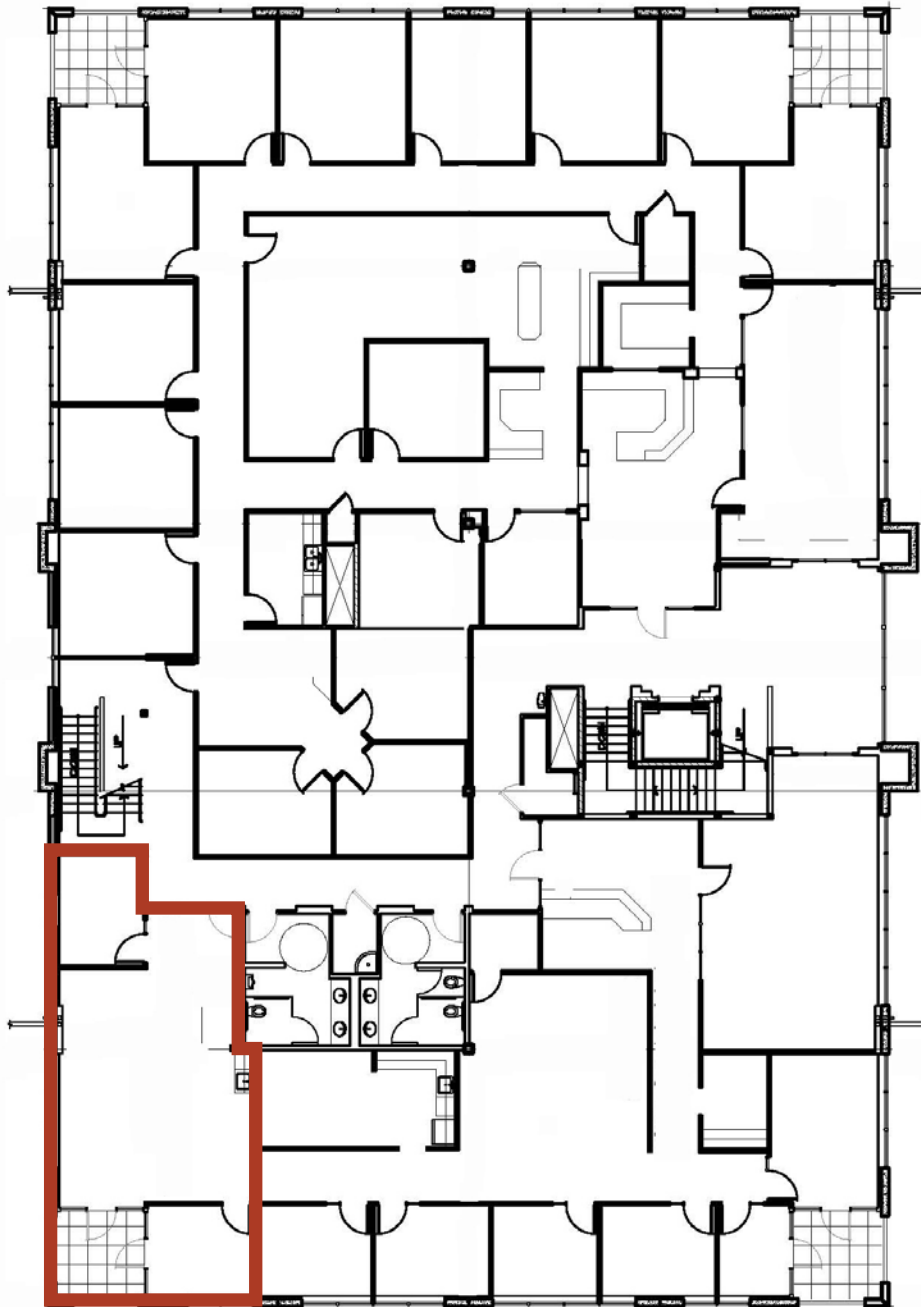
Suites 120 & 140 can be combined for 5,686 SF

This information was obtained from sources believed reliable but cannot be guaranteed. Any opinions or estimates are used for example only.

Second Floor

SUITE 240

1,066 SF



This information was obtained from sources believed reliable but cannot be guaranteed. Any opinions or estimates are used for example only.