

# HP Campus - Building 8

11311 W Chinden Blvd - Boise, ID  
CALL CENTER / OFFICE FOR LEASE



## Property Information:

**Submarket:** North  
**Available:** Immediately  
**Bldg Type:** Office  
**Quality:** Class B  
**Bldg Size:** 180,000 SF  
**Divisible:** Yes  
**# of Floors:** 3  
**Parking:** 6/1000 & greater parking available

## Lease Terms:

**Lease Term:** 3-5 years  
**Lease Type:** Full Service  
Excluding Janitorial  
**TI Allowance:** Negotiable

## Listing Comments:

Large open space available immediately.

Showers in ground floor restrooms.

Common recycling room.

Access to HP cafeteria.

Walking trail.

Close to West YMCA.

## Available Space:

SPACE:	RSF:	RATE:
1st Floor*	60,000 SF	\$16.50/SF
2nd Floor	60,000 SF	\$15.50/SF
3rd Floor	60,000 SF	\$15.50/SF

\*Divisible to 10,000 SF - see attached floor plan with sample demising layouts.

1st, 2nd and 3rd floors can be combined for 180,000 SF.

- Direct power feed from Idaho Power substation.
- 4,000 amps, 480 volt electrical service to building.
- Under floor duct system for electrical and data cabling.
- Approximately 400 to 500 6'x8' and 8'x8' cubicles in place and available.
- Dual fiber carriers to the building.
- Small emergency generator for exit lighting only.

## Contact:

### Grove T. Hummert

Ph: 208.947.0804

Fx: 208.947.0869

grove@tokcommercial.com

www.tokcommercial.com

### Patrick Shalz, SIOR

Ph: 208.947.0834

Fx: 208.947.0869

pat@tokcommercial.com

www.tokcommercial.com



### Mark Cleverley

Ph: 208.947.5507

Fx: 208.947.0869

mark@tokcommercial.com

www.tokcommercial.com

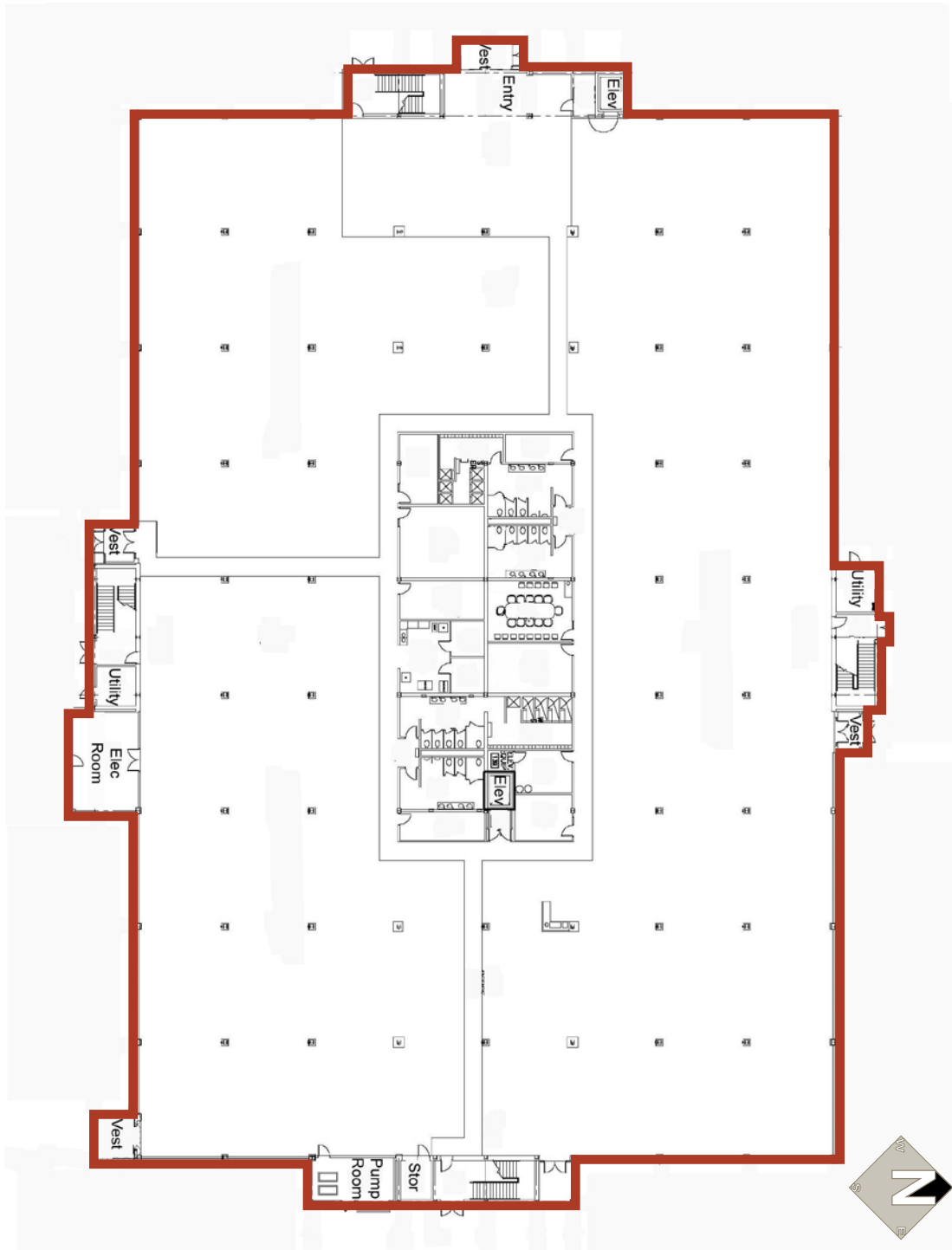


# HP Campus - Building 8

11311 W Chinden Blvd - Boise, ID

CALL CENTER / OFFICE FOR LEASE

As Is Floor Plan  
1st - 3rd Floors



**Ground Floor**

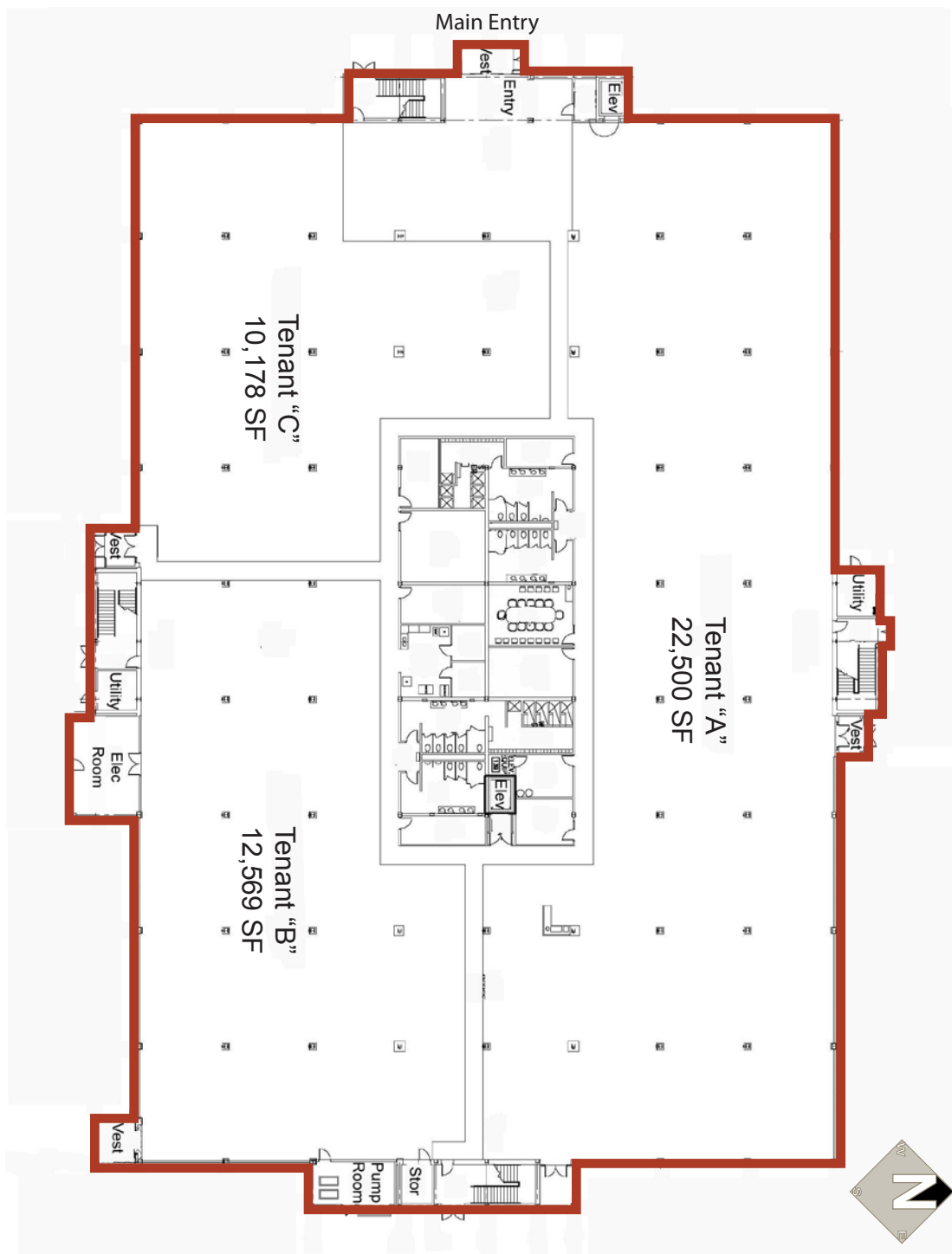
This information was obtained from sources believed reliable but cannot be guaranteed. Any opinions or estimates are used for example only.

# HP Campus - Building 8

11311 W Chinden Blvd - Boise, ID

CALL CENTER / OFFICE FOR LEASE

## TYPICAL FLOOR PLAN



**Ground Floor**

This information was obtained from sources believed reliable but cannot be guaranteed. Any opinions or estimates are used for example only.