

918-930 S. Impressions Court

Nampa, ID

INDUSTRIAL SPACE FOR LEASE



Property Information:

Submarket: Nampa
Available: 30 Day Notice
Bldg Type: Industrial
Bldg Size: 7,200 SF
Divisible: Yes
Clear Height: 16'
Power: 200 amp
 220 3-phase
Zoning: I-L
Parking: 2/1,000
Lease Term: 1-3 Years
Lease Type: Industrial Gross

Listing Comments:

One (1) grade level door (12' x 14').

Yard space available.

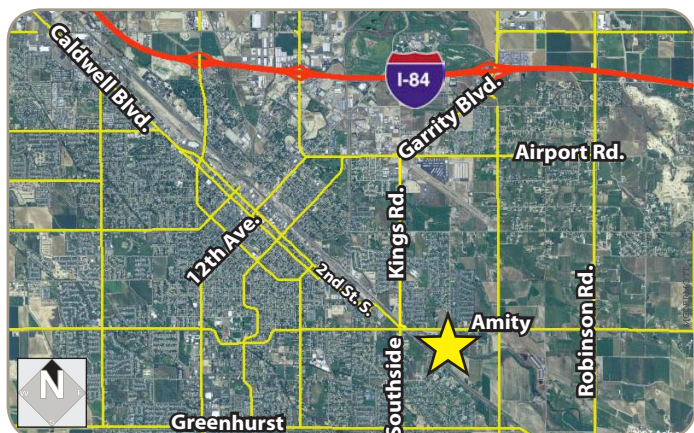
Gas space heater.

Restroom.

Available Space:

| SPACE: | RSF: | RATE/SF: | MONTHLY: |
|--------|----------------|--------------|----------|
| 930 | Office 600 SF | | |
| | Whse 1,200 SF | | |
| | Total 1,800 SF | \$0.45 Gross | \$810.00 |

**** No additional CAM charges ****



Contact:

Chris Pearson, SIOR

Ph: 208.947.0859

Fx: 208.947.0869

chris@tokcommercial.com

www.tokcommercial.com



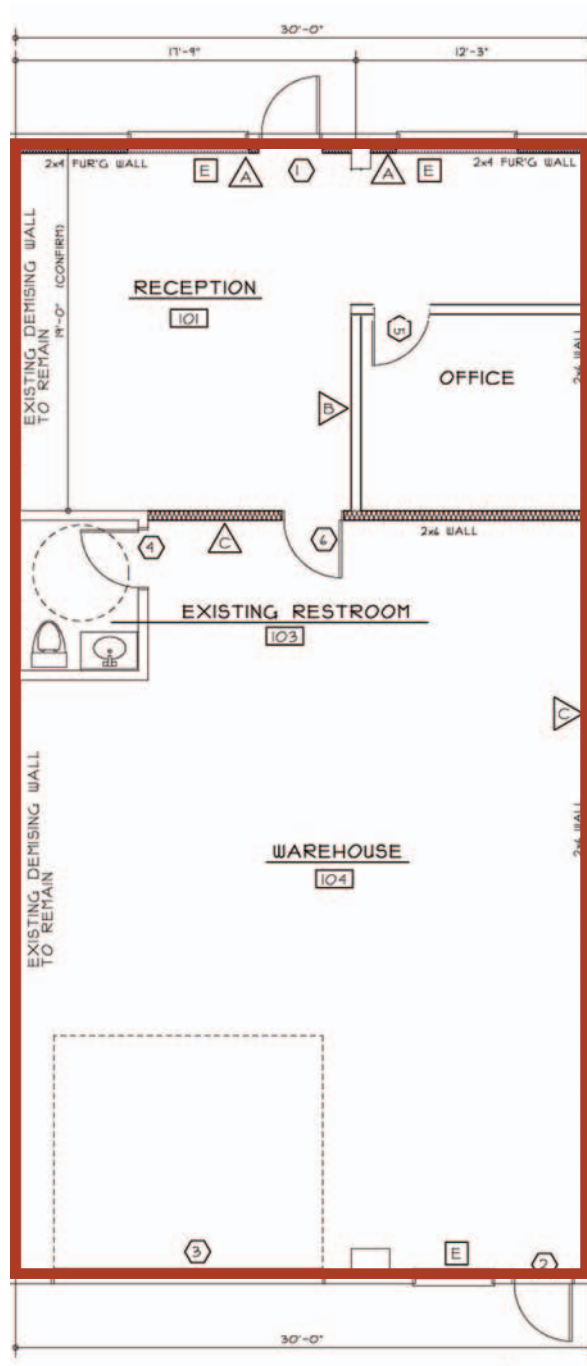
(05/14/12)

This information was obtained from sources believed reliable but cannot be guaranteed. Any opinions or estimates are used for example only.

918-930 S. Impressions Court

Nampa, ID

INDUSTRIAL SPACE FOR LEASE



**AVAILABLE
1,800 SF**

This information was obtained from sources believed reliable but cannot be guaranteed. Any opinions or estimates are used for example only.