

8481 Westpark

Boise, ID

INDUSTRIAL SPACE FOR LEASE / SALE



Property Information:

Submarket:	West
Available:	Immediately
Bldg Type:	Tilt-up and Dry-vit
Bldg Size:	40,000 SF
Divisible:	13,000 SF
Clear Height:	22' - 24'
Grade Level:	None
Dock Doors:	3
Zoning:	M-3
Parking:	Ample

Listing Comments:

Completed in 1979; renovated in 2001.

Close to freeway, retail, and restaurants.

Raised load bearing floor in a portion of the warehouse.

Heavy electrical and air.

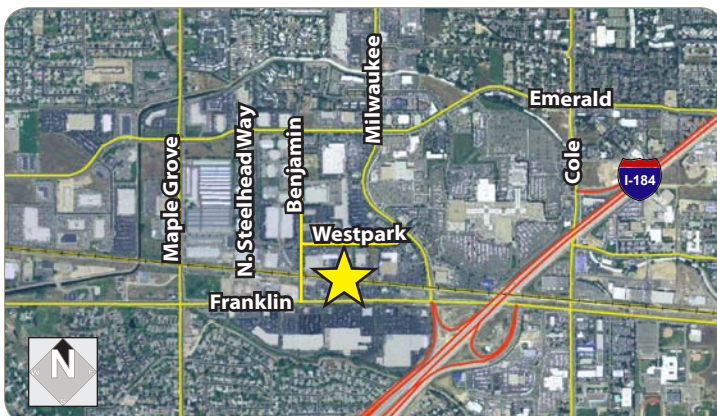
Sale Terms:

Price per SF:	\$60/SF
Total Price:	\$2,400,000

Lease Terms:

Contact agent for details.

Building is easily divided into 2 or 3 multi-tenant spaces.



Contact:

Jerry Van Engen

Ph: 208.947.0840

Fx: 208.947.0869

jerry@tokcommercial.com

www.tokcommercial.com

Peter Oliver, SIOR, CCIM

Ph: 208.947.0816

Fx: 208.947.0869

peter@tokcommercial.com

www.tokcommercial.com



(01/12/12)

This information was obtained from sources believed reliable but cannot be guaranteed. Any opinions or estimates are used for example only.

8481 Westpark

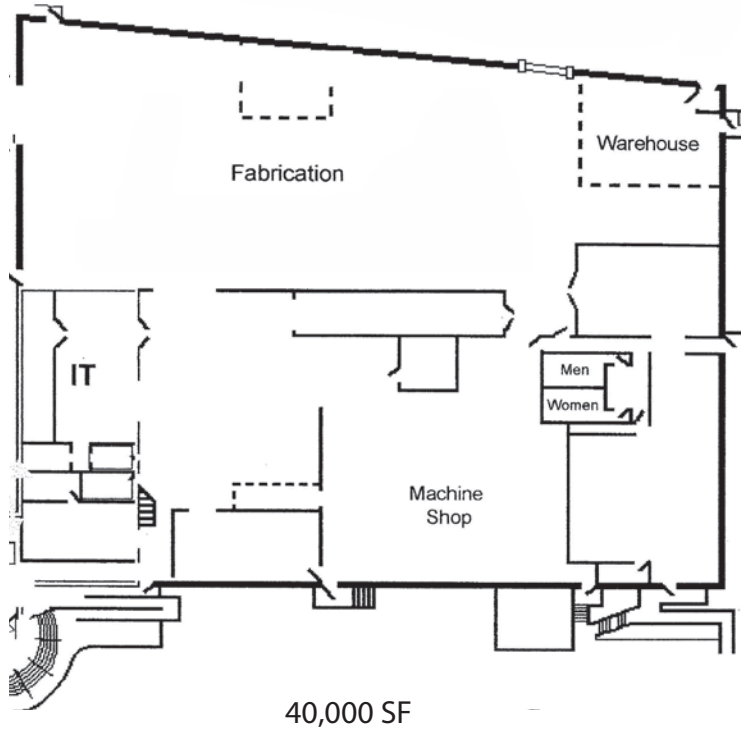
Boise, ID

INDUSTRIAL SPACE FOR LEASE / SALE



This information was obtained from sources believed reliable but cannot be guaranteed. Any opinions or estimates are used for example only.

FLOOR PLAN

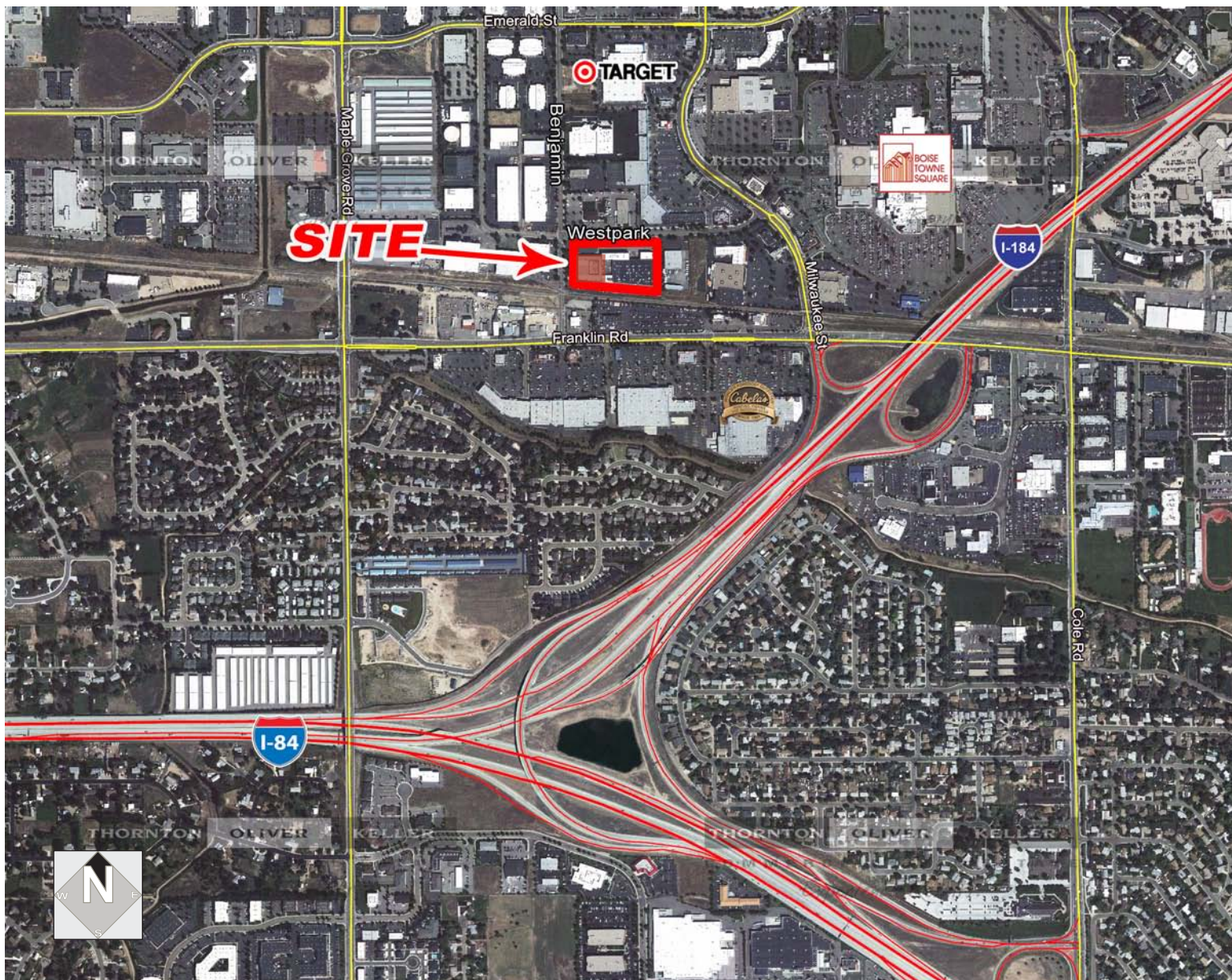


This information was obtained from sources believed reliable but cannot be guaranteed. Any opinions or estimates are used for example only.

8481 Westpark

Boise, ID

INDUSTRIAL SPACE FOR LEASE / SALE



This information was obtained from sources believed reliable but cannot be guaranteed. Any opinions or estimates are used for example only.