

8455 Westpark

Boise, ID

INDUSTRIAL SPACE FOR LEASE / SALE



Property Information:

Submarket:	West
Available:	Immediately
Bldg Type:	Tilt-up and Dry-vit
Bldg Size:	80,000 SF
Divisible:	20,000 SF
Clear Height:	22' - 24'
Grade Level:	2
Dock Doors:	3
Zoning:	M-1D
Parking:	Ample

Listing Comments:

- Completed in 1979; renovated in 2001.
- Close to freeway, retail, and restaurants.
- Raised load bearing floor in a portion of the warehouse.
- Heavy electrical and air.

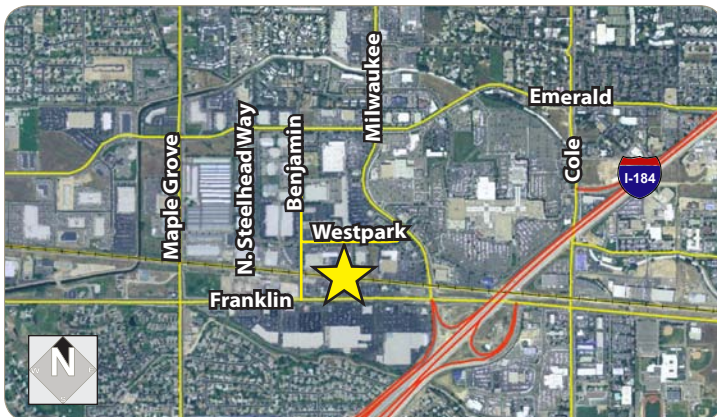
Sale Terms:

Price per SF:	\$60/SF
Total Price:	\$4,800,000

Lease Terms:

Contact agent for details.

Building is easily divided into 3 or 4 multi-tenant spaces.



Contact:

Jerry Van Engen

Ph: 208.947.0840
Fx: 208.947.0869
jerry@tokcommercial.com
www.tokcommercial.com

Peter Oliver, SIOR, CCIM

Ph: 208.947.0816
Fx: 208.947.0869
peter@tokcommercial.com
www.tokcommercial.com



(02/03/12)

This information was obtained from sources believed reliable but cannot be guaranteed. Any opinions or estimates are used for example only.

8455 Westpark

Boise, ID

INDUSTRIAL SPACE FOR LEASE / SALE



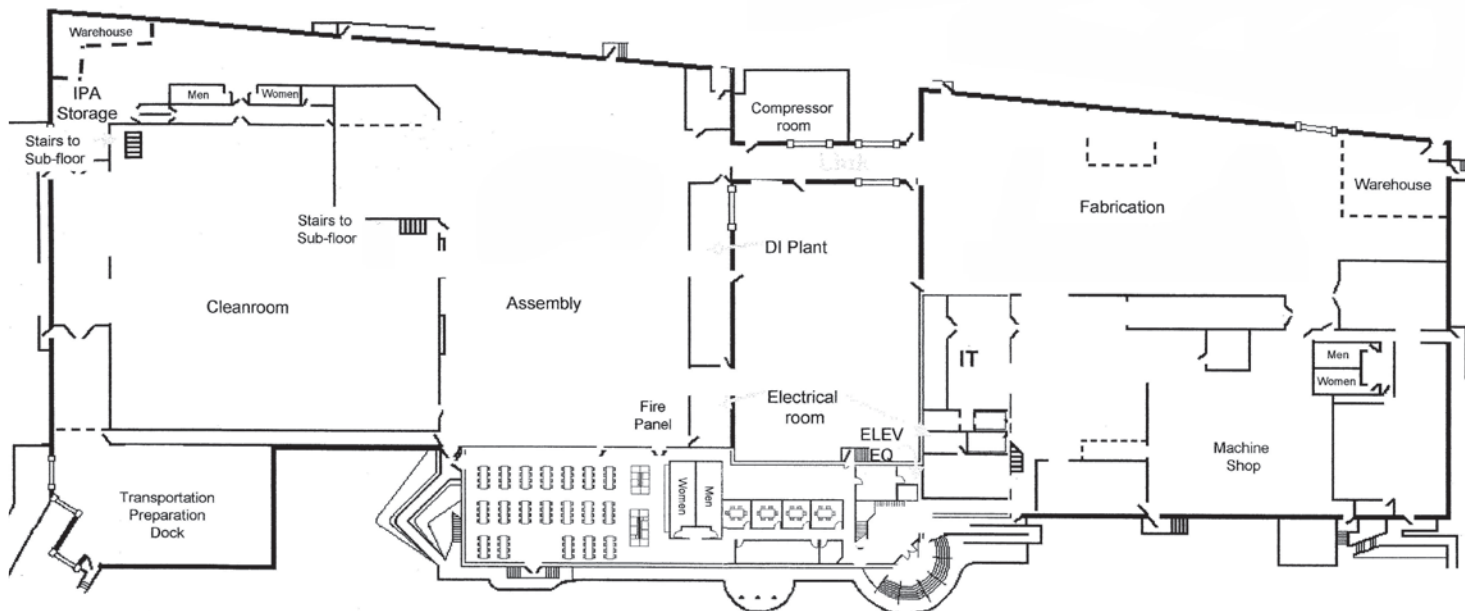
This information was obtained from sources believed reliable but cannot be guaranteed. Any opinions or estimates are used for example only.

8455 Westpark

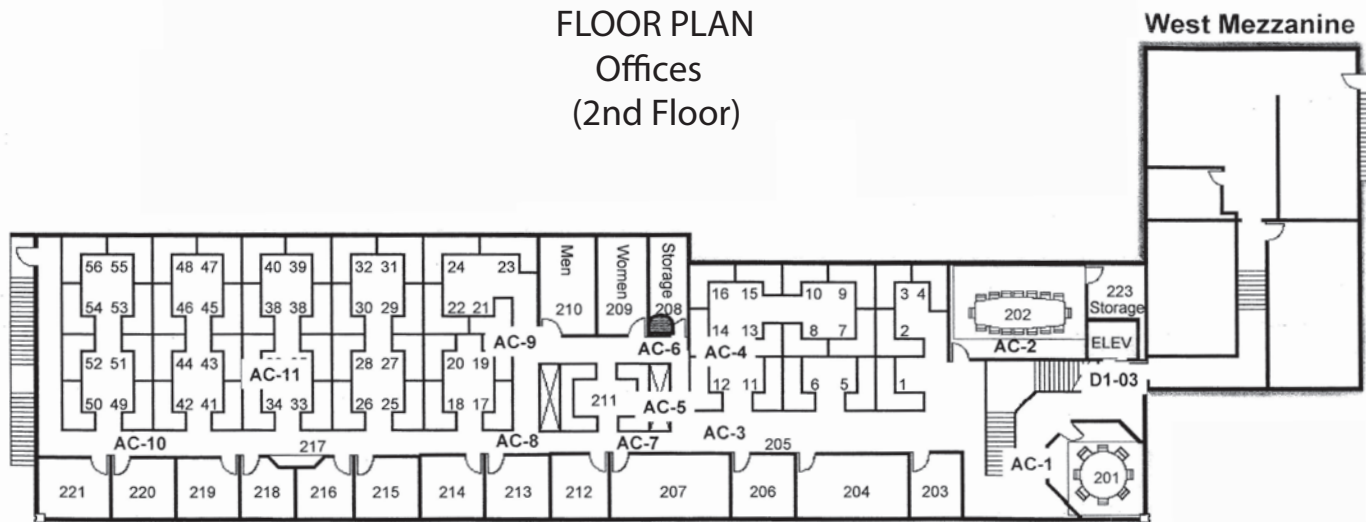
Boise, ID

INDUSTRIAL SPACE FOR LEASE / SALE

FLOOR PLAN (1st Floor)



FLOOR PLAN Offices (2nd Floor)



This information was obtained from sources believed reliable but cannot be guaranteed. Any opinions or estimates are used for example only.

8455 Westpark

Boise, ID

INDUSTRIAL SPACE FOR LEASE / SALE



This information was obtained from sources believed reliable but cannot be guaranteed. Any opinions or estimates are used for example only.