

7503 Northview

Boise, ID

CHURCH FOR LEASE



Property Information:

Submarket: West
Available: Immediately
Bldg Type: Brick
Bldg Size: 9,456 SF
Divisible: No
of Floors: 1
Parking: Ample

Lease Terms:

Lease Term: 3 - 5 Years
Lease Type: Gross

Listing Comments:

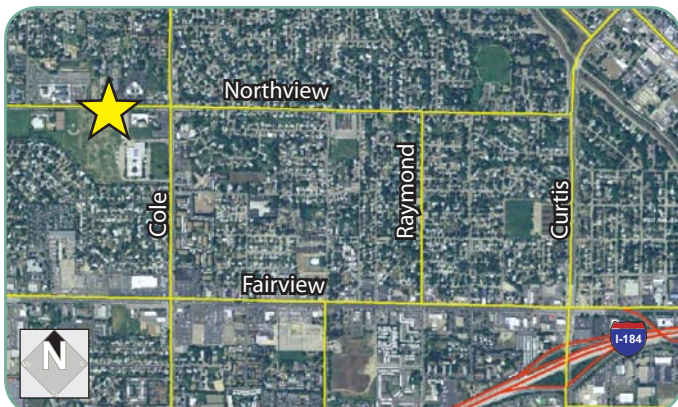
Sanctuary seats 560 people.

Separate entrance for offices.

Possible classrooms for Sunday school.

Available Space:

RSF:	RATE:
9,456 SF	\$6,500/Mo.



Contact:

Dan Minnaert, SIOR, CCIM

Ph: 208.947.0845

Fx: 208.947.0869

dan@tokcommercial.com

www.tokcommercial.com



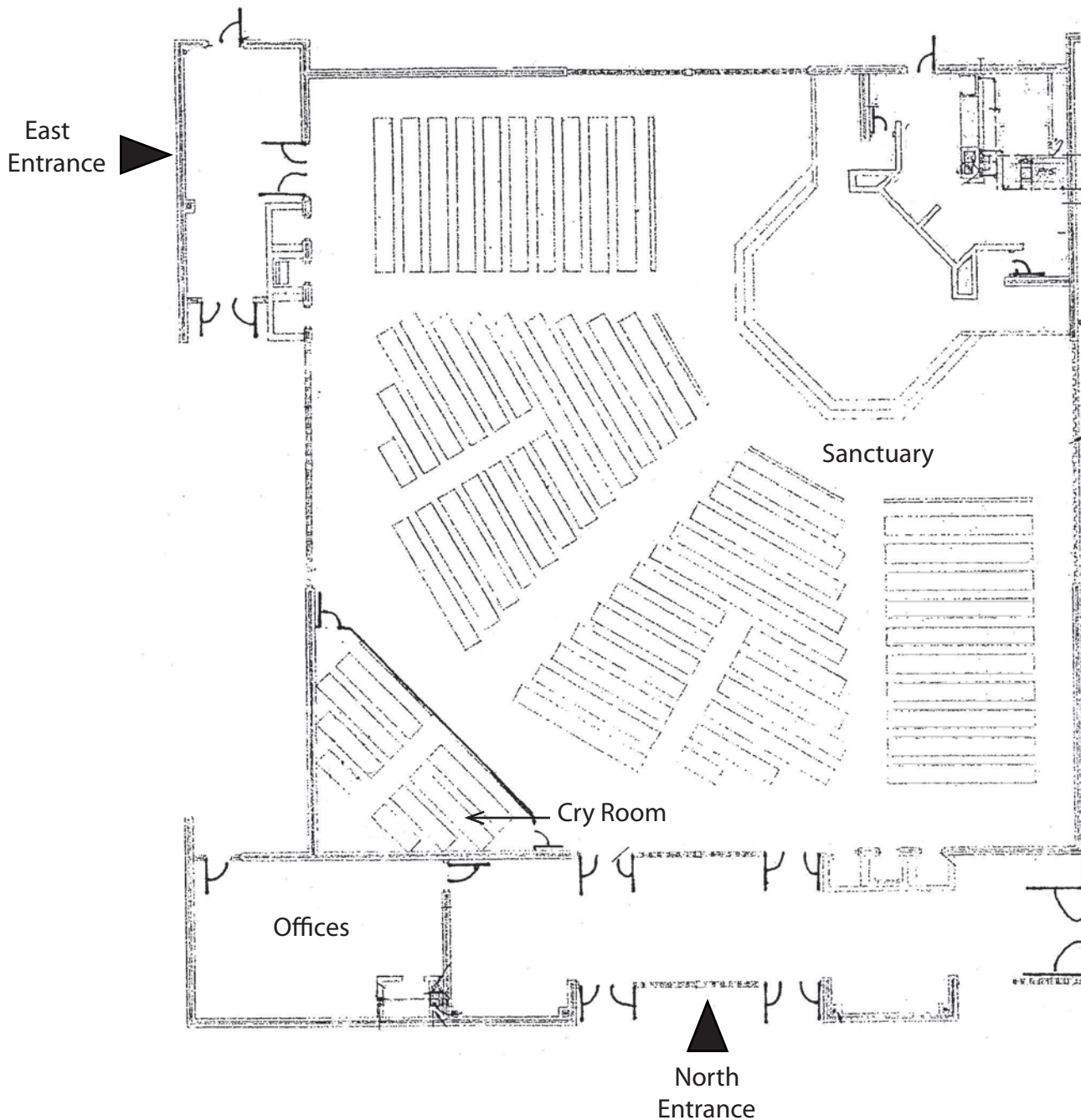
7503 Northview

Boise, ID

CHURCH FOR LEASE

FLOOR PLAN

9,456 SF



This information was obtained from sources believed reliable but cannot be guaranteed. Any opinions or estimates are used for example only.