

720 N. Allumbaugh

Boise, ID

INDUSTRIAL BUILDING FOR SALE



Property Information:

Submarket:	Central
Available:	Immediately
Bldg Type:	Metal
Bldg Size:	12,000 SF
Lot Size:	0.85 Acres
Clear Height:	12' - 14'
Dock Doors:	2
Grade Level:	8
Power:	3 Phase
Zoning:	M1-D
Parking:	Ample

Listing Comments:

- Centrally located.
- Good exposure to the Connector.
- Large lot provides easy turn around for larger delivery trucks.
- Great access to Emerald, Franklin & Cole Roads.
- Paved on-site parking available.

Price:

~~-\$720,000 (\$60.00/SF)~~
~~-\$650,000 (\$54.00/SF)~~
\$599,000 (\$49.00/SF)

Description of Space:

Office:	800 SF
Refrigerated Space:	2,800 SF
Dry Storage:	4,400 SF
Total Vacant:	8,000 SF
Total Leased:	4,000 SF at \$1,600/Mo. Gross
Total SF:	12,000 SF



Contact:

Chris Pearson, SIOR

Ph: 208.947.0859

Fx: 208.947.0869

chris@tokcommercial.com

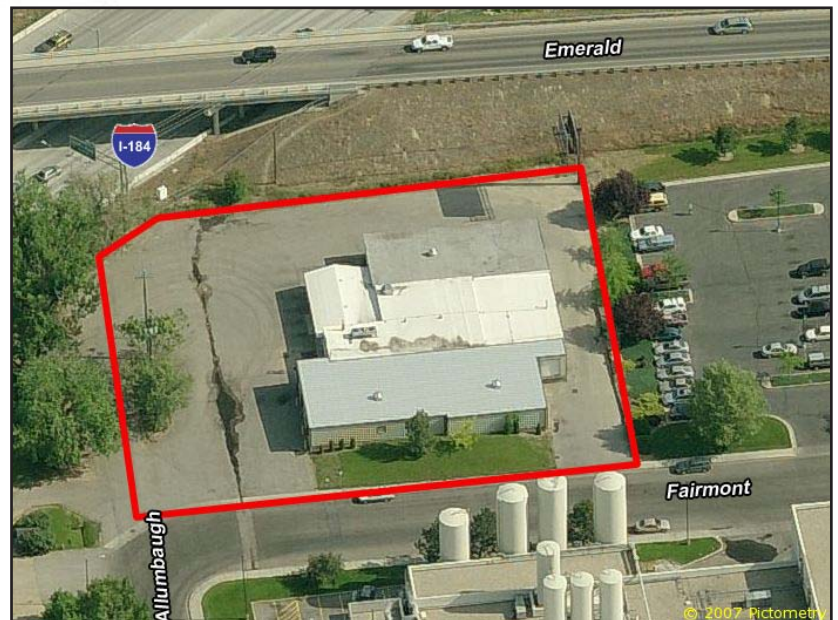
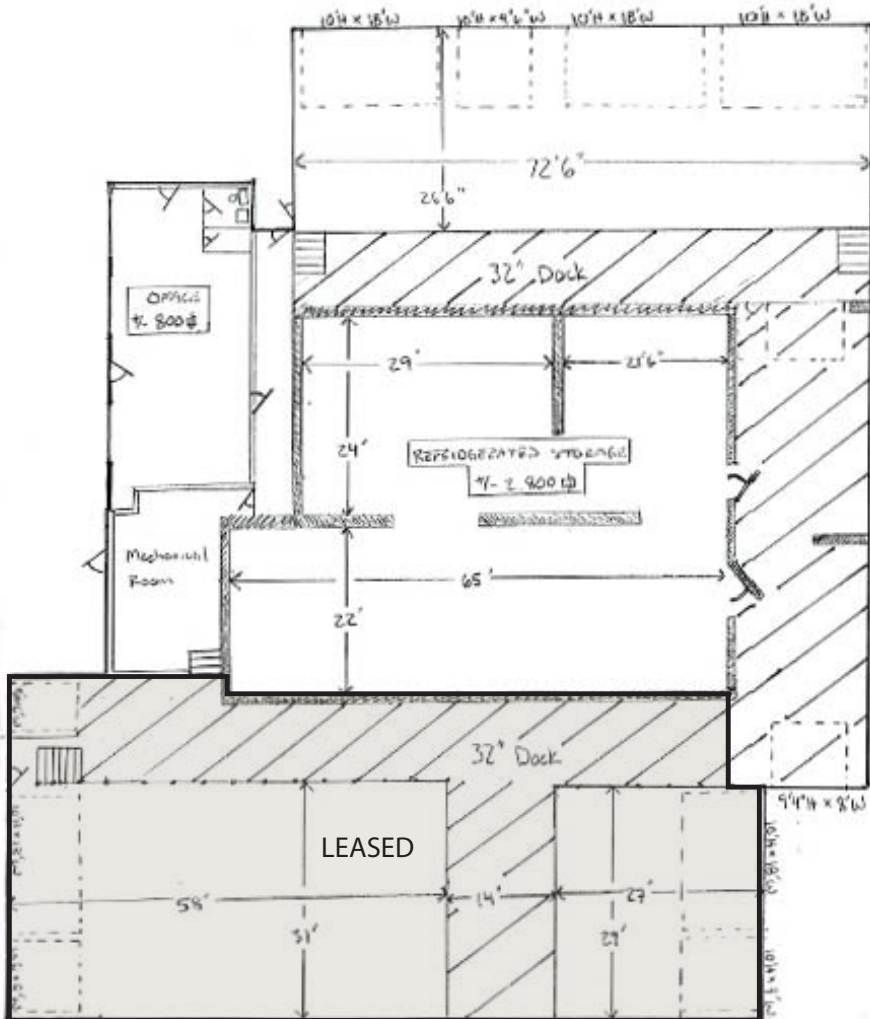
www.tokcommercial.com



720 N. Allumbaugh

Boise, ID

INDUSTRIAL BUILDING FOR SALE



This information was obtained from sources believed reliable but cannot be guaranteed. Any opinions or estimates are used for example only.