

6418 W. Gowen

Boise, ID

INDUSTRIAL SPACE / YARD FOR LEASE / SALE



Property Information:

Submarket:	Airport
Available:	Immediately
Bldg Type:	Industrial
Bldg Size:	15,099 SF
Clear Height:	26'
Dock:	1 (in the yard)
Grade Level:	4 (16'x18') 4 (14'x14')
Power:	3 Phase
Zoning:	M-1D
Parking:	Ample

Listing Comments:

- 10 ton bridge crane in shop.
- Drive-thru rollup doors.
- Excellent location, close to I-84.
- Class A building.

Available Space:

RSF:	MONTHLY:
Main Floor Office 2,467 SF	
Mez. Office 2,250 SF	
Shop Whse 7,475 SF	
Parts Whse 2,907 SF	
Total 15,099 SF	\$9,193.00
Yard 2.0 Acres	<u>\$2,557.00</u>
	Total: \$11,750.00

Lease Terms:

Lease Type:	NNN
Est. NNN:	\$0.08/SF

Sale Terms:

Price:	\$1,375,000
---------------	-------------

Contact:

Dan Minnaert, SIOR, CCIM

Ph: 208.947.0845
 Fx: 208.947.0869
 dan@tokcommercial.com
 www.tokcommercial.com

Devin Pierce

Ph: 208.947.0850
 Fx: 208.947.0869
 devin@tokcommercial.com
 www.tokcommercial.com



(09/19/11)

This information was obtained from sources believed reliable but cannot be guaranteed. Any opinions or estimates are used for example only.

6418 W. Gowen

Boise, ID

INDUSTRIAL SPACE / YARD FOR LEASE / SALE

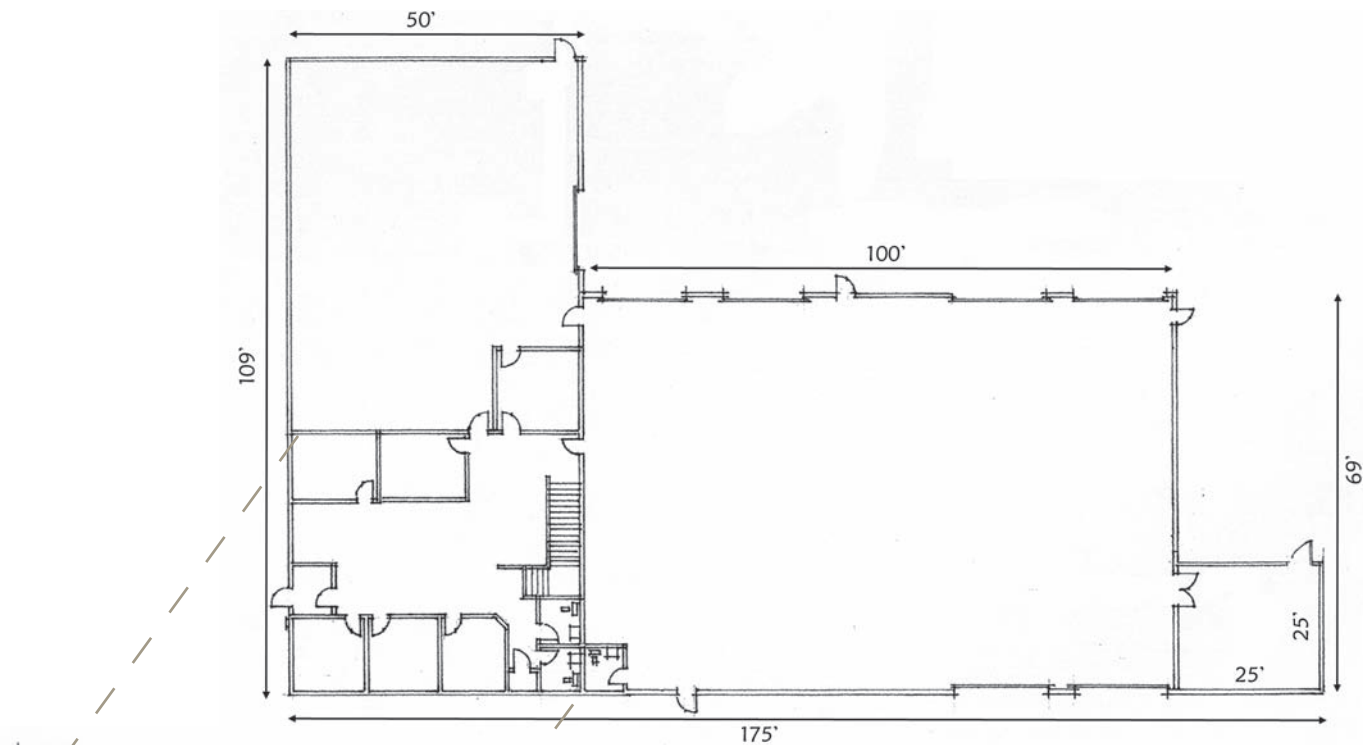


This information was obtained from sources believed reliable but cannot be guaranteed. Any opinions or estimates are used for example only.

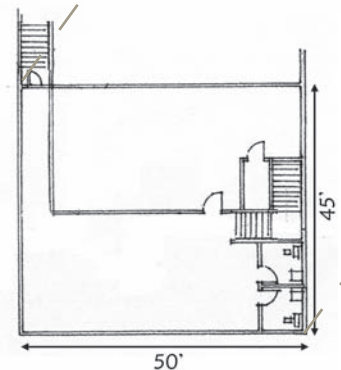
6418 W. Gowen

Boise, ID

INDUSTRIAL SPACE / YARD FOR LEASE / SALE



MAIN FLOOR



UPPER FLOOR



This information was obtained from sources believed reliable but cannot be guaranteed. Any opinions or estimates are used for example only.