

# 600 N. Eagle Road

Meridian, ID

**INDUSTRIAL SPACE FOR LEASE**



### Property Information:

<b>Submarket:</b>	Meridian
<b>Available:</b>	Immediately
<b>Bldg Type:</b>	Industrial
<b>Bldg Size:</b>	23,760 SF
<b>Divisible:</b>	11,880 SF
<b>Parcel Size:</b>	4 Acres
<b>Clear Height:</b>	18'
<b>Dock Doors:</b>	Yes
<b>Grade Level:</b>	Yes
<b>Power:</b>	Ample 3 Phase
<b>Zoning:</b>	I-L
<b>Lease Type:</b>	NNN
<b>NNN Costs:</b>	\$0.10/SF/Month

### Listing Comments:

Ample fenced yard with great exposure on Eagle Road.

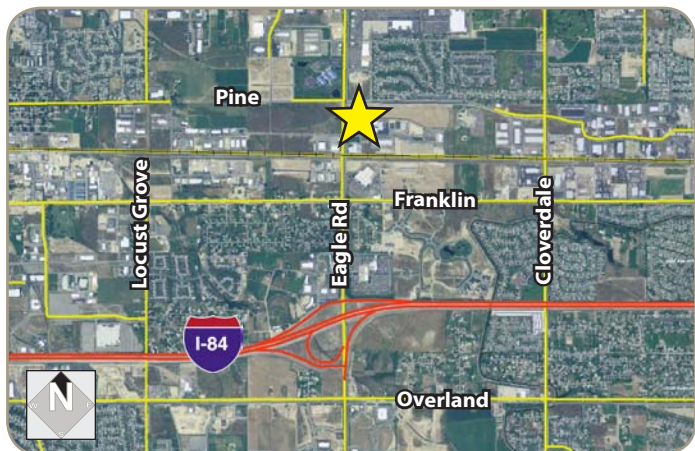
Close to freeway exit.

Wash bay.

Building is divisible to 11,880 SF.

### Available Space:

SIZE:	RATE/SF:	MONTHLY:
Showroom/Office 4,714 SF		
Parts/Whse 16,546 SF		
Engineered Mezz 2,500 SF		
<b>Total 23,760 SF</b>	<b>\$0.52</b>	<b>\$12,355</b>
Fenced Yard 2.47 Acres	<b>\$0.03</b>	<b>\$3,145</b>
<b>Total Building &amp; Yard</b>		<b><u>\$15,500/Mo. NNN</u></b>



### Contact:

**Devin Pierce**

Ph: 208.947.0850  
Fx: 208.947.0869  
devin@tokcommercial.com  
www.tokcommercial.com

**Dan Minnaert, SIOR, CCIM**

Ph: 208.947.0845  
Fx: 208.947.0869  
dan@tokcommercial.com  
www.tokcommercial.com



# 600 N. Eagle Road

Meridian, ID

INDUSTRIAL SPACE FOR LEASE

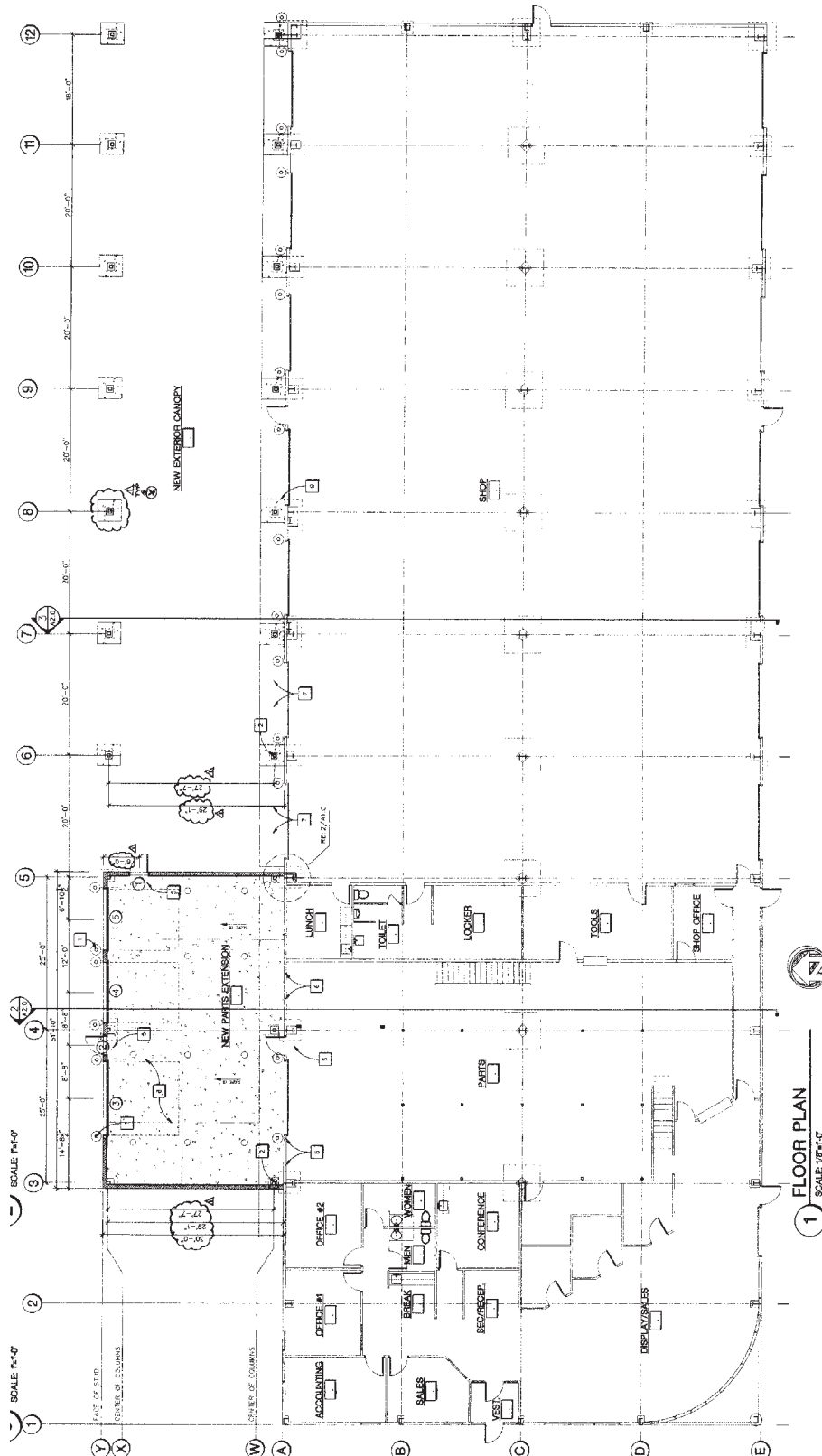


This information was obtained from sources believed reliable but cannot be guaranteed. Any opinions or estimates are used for example only.

# 600 N. Eagle Road

Meridian, ID

**INDUSTRIAL SPACE FOR LEASE**



This information was obtained from sources believed reliable but cannot be guaranteed. Any opinions or estimates are used for example only.