

4870 W. Emerald

Boise, ID

RETAIL SPACE FOR LEASE



Demographics:

Population: 110,078 (3 mi.)
HH Income: \$57,477 (3 mi.)
 2009

Key Tenants:

Emerald Lanes

Property Information:

Available: Immediately
Bldg Size: 3,100 SF
Divisible: No
Parking: 4/1,000 SF

Listing Comments:

Inexpensive showroom space.

Great bench location.

Immediate occupancy!

Available Space:

RSF:	RATE:
3,100 SF	\$7.95

Lease Terms:

Lease Term: 3 - 5 Yrs
Lease Type: NNN
Est. NNN's: \$1.50/SF



Contact:

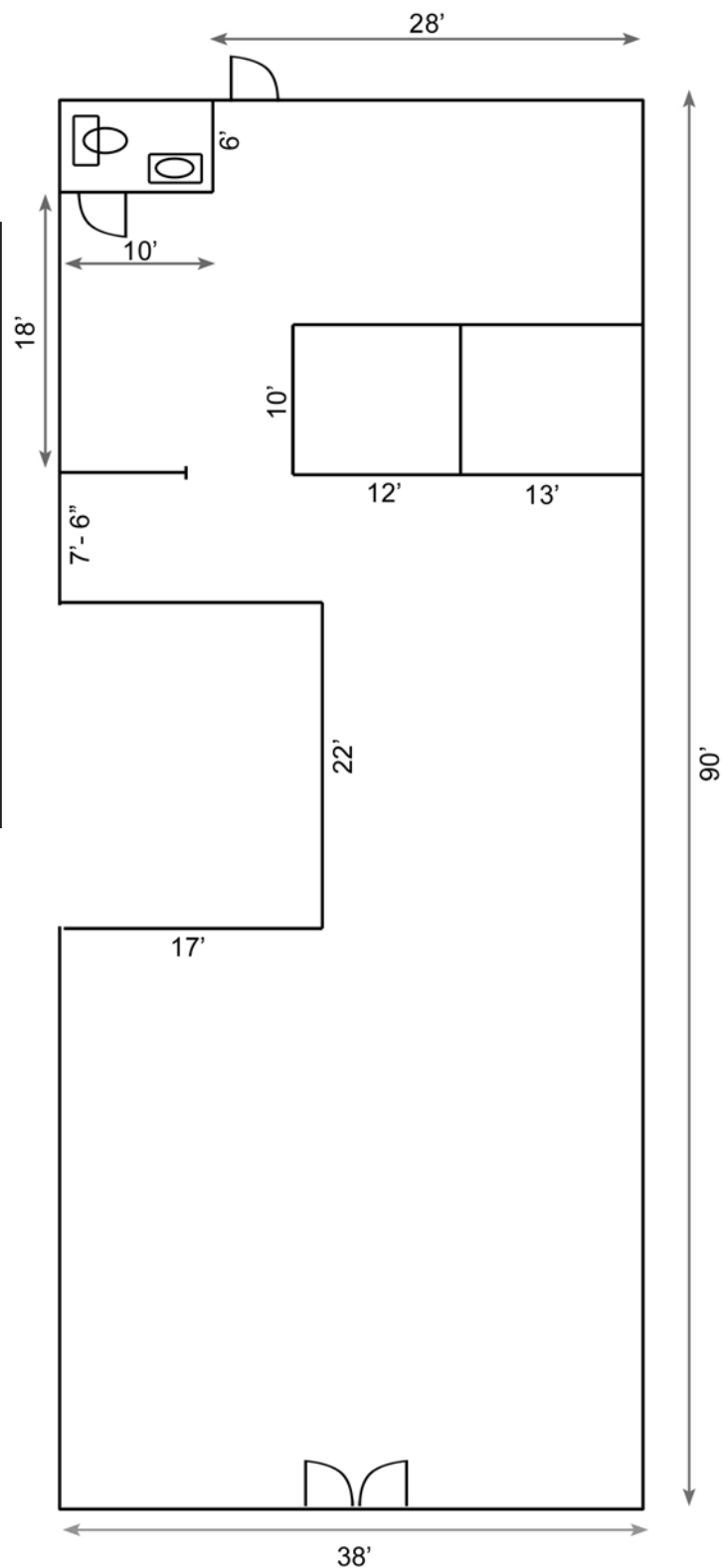
Bob Mitchell, CSM
 Ph: 208.947.0836
 Fx: 208.947.0869
 bob@tokcommercial.com
 www.tokcommercial.com



4870 W. Emerald

Boise, ID

RETAIL SPACE FOR LEASE



This information was obtained from sources believed reliable but cannot be guaranteed. Any opinions or estimates are used for example only.