

420 W. Waltman Lane

Meridian, ID

RESIDENTIAL OFFICE SPACE FOR LEASE



Property Information:

| | |
|---------------------|------------------------|
| Submarket: | Meridian |
| Available: | Immediately |
| Bldg Type: | Residential/Commercial |
| Quality: | C |
| Bldg Size: | 2,044 SF |
| Parcel Size: | 0.92 |
| # of Floors: | 2 |
| Parking: | 7/1,000 |

Lease Terms:

| | |
|----------------------|----------------|
| Lease Term: | 2 - 5 Years |
| Lease Type: | Modified Gross |
| TI Allowance: | Negotiable |

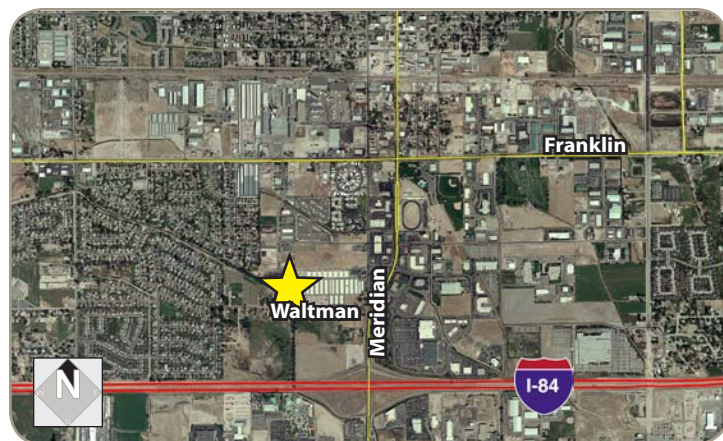
Listing Comments:

- Close to Meridian exit.
- Quiet street.
- Separate employee entrance.
- Gazebo and garage for excess storage.

Available Space:

| SPACE: | RSF: | RATE: |
|--------|----------|-----------|
| Ste 1 | 1,350 SF | \$7.92/SF |

*Please Do Not Disturb Tenant
Contact Agent for Showing*



Contact:

Devin Pierce

Ph: 208.947.0850
Fx: 208.947.0869
devin@tokcommercial.com
www.tokcommercial.com

Dan Minnaert, SIOR, CCIM

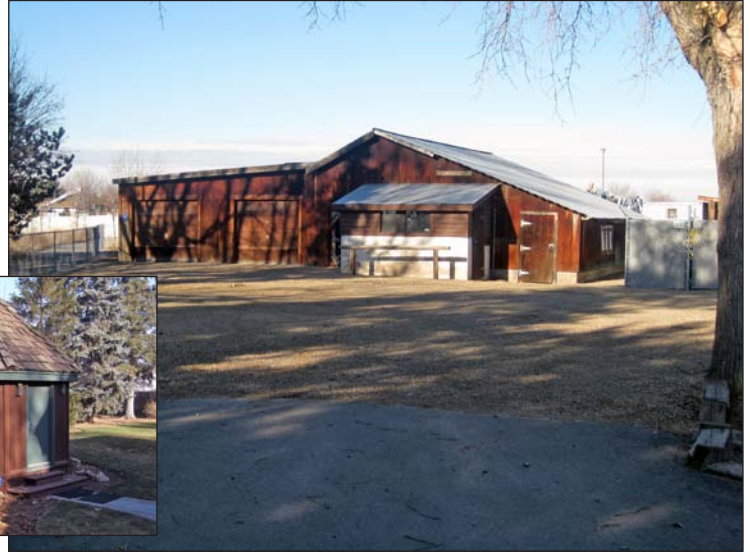
Ph: 208.947.0845
Fx: 208.947.0869
dan@tokcommercial.com
www.tokcommercial.com



420 W. Waltman Lane

Meridian, ID

RESIDENTIAL OFFICE SPACE FOR LEASE



This information was obtained from sources believed reliable but cannot be guaranteed. Any opinions or estimates are used for example only.