

410 S. Orchard - Condo 184

OFFICE SPACE FOR LEASE / SALE



Property Information:

Submarket: Central
Available: Immediately
Bldg Type: Office
Quality: Class B
Bldg Size: 4,800 SF
Divisible: To 1,920 SF
of Floors: 2
Parking: 4:1000



Listing Comments:

Located in a professional business park.
 Within minutes of Boise Towne Square and Downtown.
 Centrally located.
 Easy access off I-84 at the Orchard exit.
 Orchard Street visibility.
 Subject to lender approval.

Available Space:

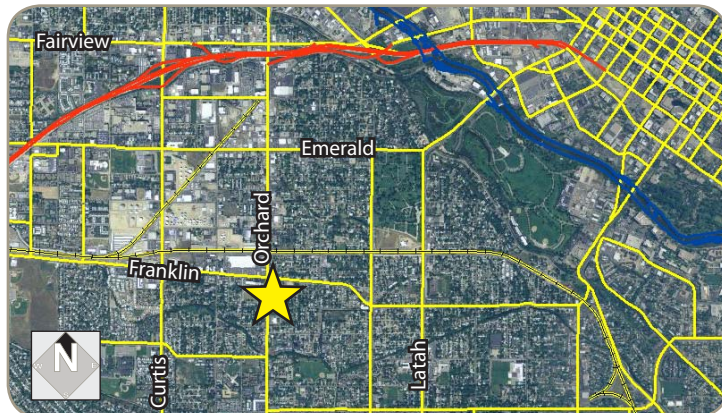
SPACE:	RSF:	RATE/SF:
Suite A	2,880 SF	\$7.00/SF
Suite B	1,920 SF	\$6.00/SF
Suites A & B	4,800 SF	\$6.00/SF

Lease Terms:

Lease Term: 1 - 3 years
Lease Type: Gross
TI Allowance: Negotiable

Sale Terms:

Price: ~~-\$70.00/SF~~ **\$45.00/SF**



Contact:

Chris Pearson, SIOR
 Ph: 208.947.0859
 Fx: 208.947.0869
 chris@tokcommercial.com
 www.tokcommercial.com

Mark Cleverley
 Ph: 208.947.5507
 Fx: 208.947.0869
 markc@tokcommercial.com
 www.tokcommercial.com



410 S. Orchard - Condo 184

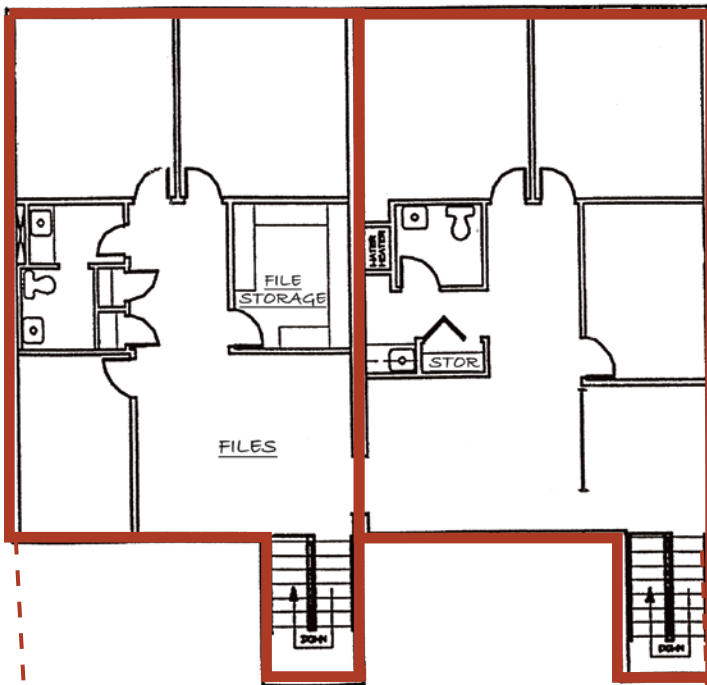
OFFICE SPACE FOR LEASE / SALE



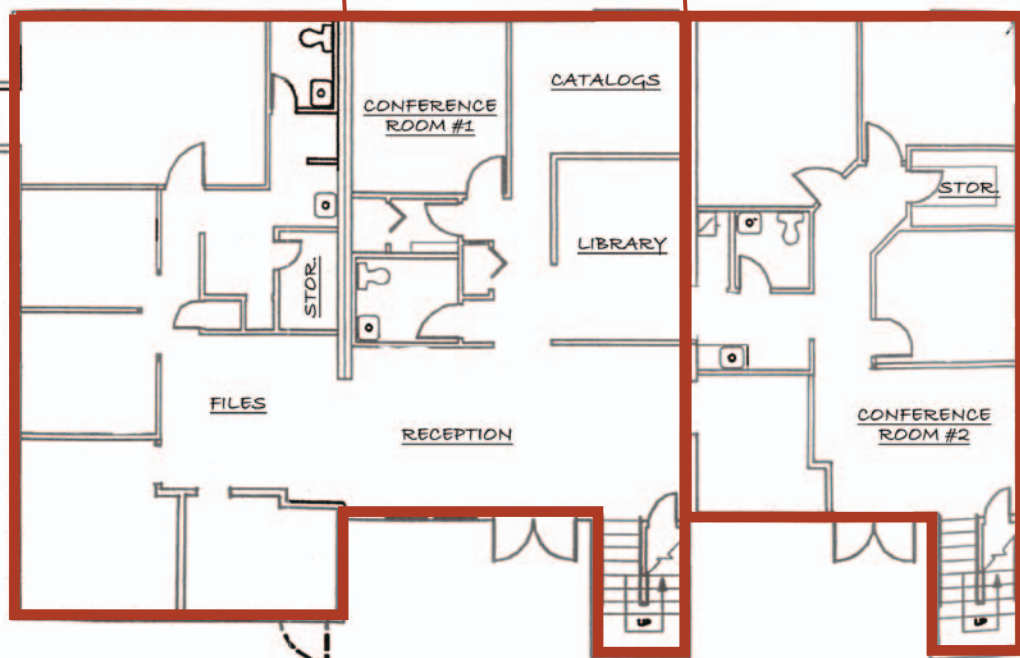
This information was obtained from sources believed reliable but cannot be guaranteed. Any opinions or estimates are used for example only.

410 S. Orchard - Condo 184

OFFICE SPACE FOR LEASE / SALE



SECOND FLOOR



FIRST FLOOR

SUITE A
2,880 SF

SUITE B
1,920 SF

This information was obtained from sources believed reliable but cannot be guaranteed. Any opinions or estimates are used for example only.