

# 3900 N. Can-Ada Road

Nampa, ID

OFFICE BLDG WITH EXCESS LAND FOR SALE



## Sale Terms:

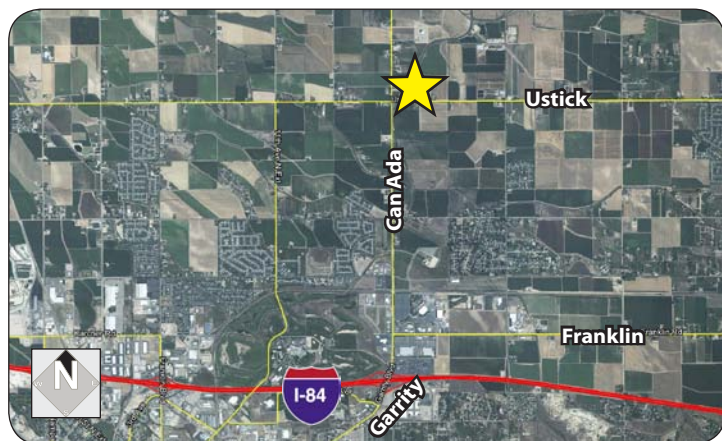
**Sale Price:** \$445,000

## Listing Comments:

Unique facility for an owner/user seeking office and expansive yard space.

Excellent location in the center of the Treasure Valley.

Easy access to I-84 and Chinden.



## Property Information:

**Submarket:** Nampa  
**Available:** Immediately  
**Bldg Type:** Office  
**Quality:** Class A  
**Bldg Size:** 2,486 SF  
**Parcel Size:** 13.6 Acres  
**Completed:** 2006  
**# of Floors:** 1  
**Parking:** Ample  
**Zoning:** RUT (Ada County)

## Contact:

**Peter J. Oliver, SIOR, CCIM**

Ph: 208.947.0816

Fx: 208.947.0869

peter@tokcommercial.com

www.tokcommercial.com



**Chris Pearson, SIOR**

Ph: 208.947.0859

Fx: 208.947.0869

chris@tokcommercial.com

www.tokcommercial.com



(11/18/11)

This information was obtained from sources believed reliable but cannot be guaranteed. Any opinions or estimates are used for example only.

# 3900 N. Can-Ada Road

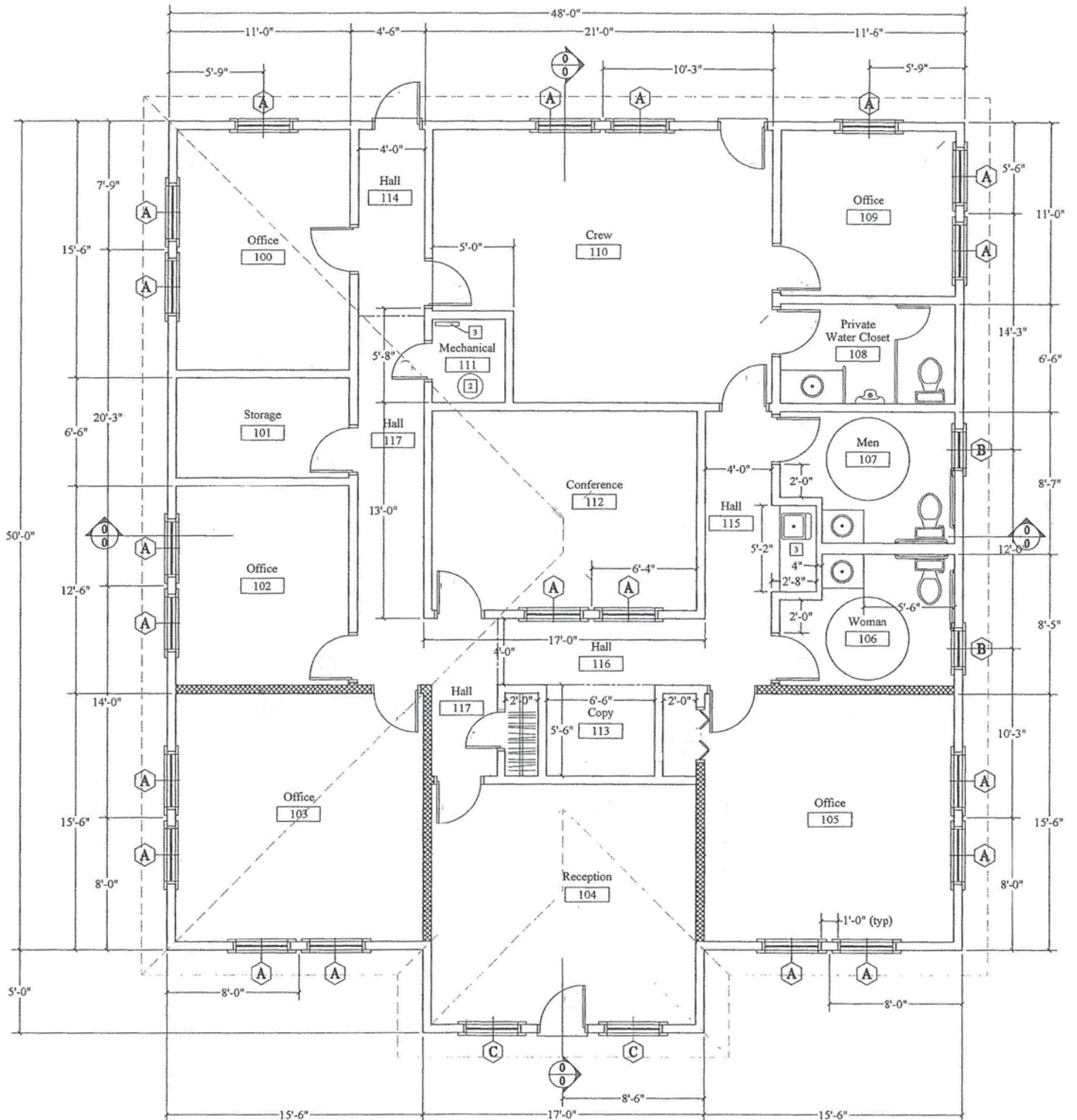
Nampa, ID

OFFICE BLDG WITH EXCESS LAND FOR SALE



This information was obtained from sources believed reliable but cannot be guaranteed. Any opinions or estimates are used for example only.

## FLOOR PLAN

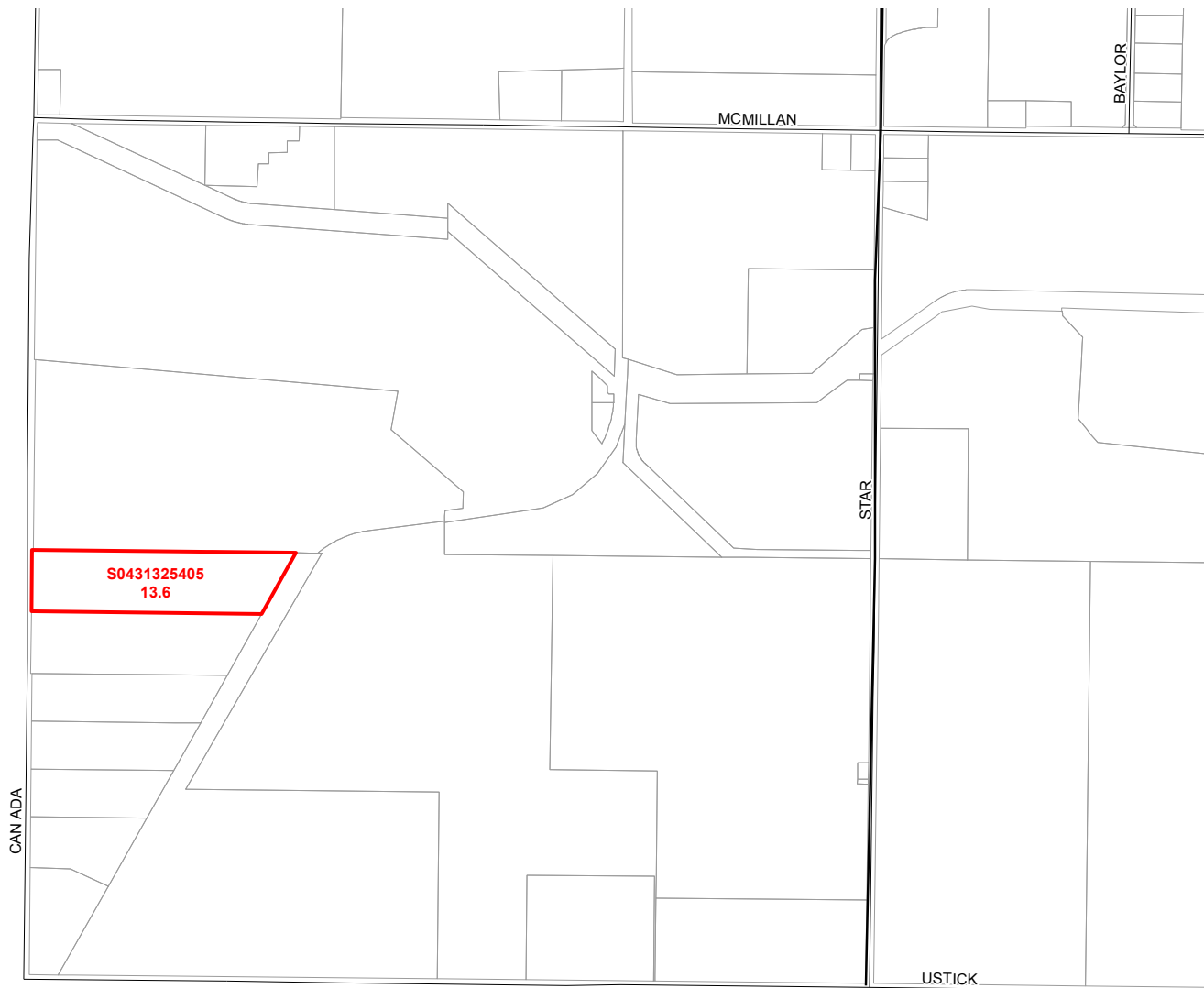


This information was obtained from sources believed reliable but cannot be guaranteed. Any opinions or estimates are used for example only.

# 3900 N. Can-Ada Road

Nampa, ID

OFFICE BLDG WITH EXCESS LAND FOR SALE



This information was obtained from sources believed reliable but cannot be guaranteed. Any opinions or estimates are used for example only.