

Sundance Building

2619 Sundance Road - Nampa, ID
INDUSTRIAL SPACE FOR LEASE



Property Information:

Submarket:	Nampa
Available:	60 Day Notice
Acres:	1.11 Acres
Bldg Type:	Industrial
Bldg Size:	15,400 SF
Divisible:	10,616 SF
Clear Height:	20'
Dock Doors:	4
Grade Level:	4
Parking:	2:1,000
Zoning:	I-L
Power:	120 - 208 / 3 phase

Listing Comments:

Located in Nampa near restaurants, health club, retail and banks.

Excellent access to Karcher Road and I-84.

Grade level and dock high doors.

Excellent retail/warehouse potential.

Signage on Sundance Road.

Fully contained paint booth.

Former cabinet shop facility.

Available Space:

RSF:	RATE/SF:
10,616 SF Whse	\$0.25/SF + NNN
700 SF Office Trailer	\$0.50/SF Gross

Lease Terms:

Lease Term:	1- 3 Years
Lease Type:	NNN
NNN Costs:	\$0.12/SF



Contact:

Chris Pearson, SIOR

Ph: 208.947.0859

Fx: 208.947.0869

chris@tokcommercial.com

www.tokcommercial.com

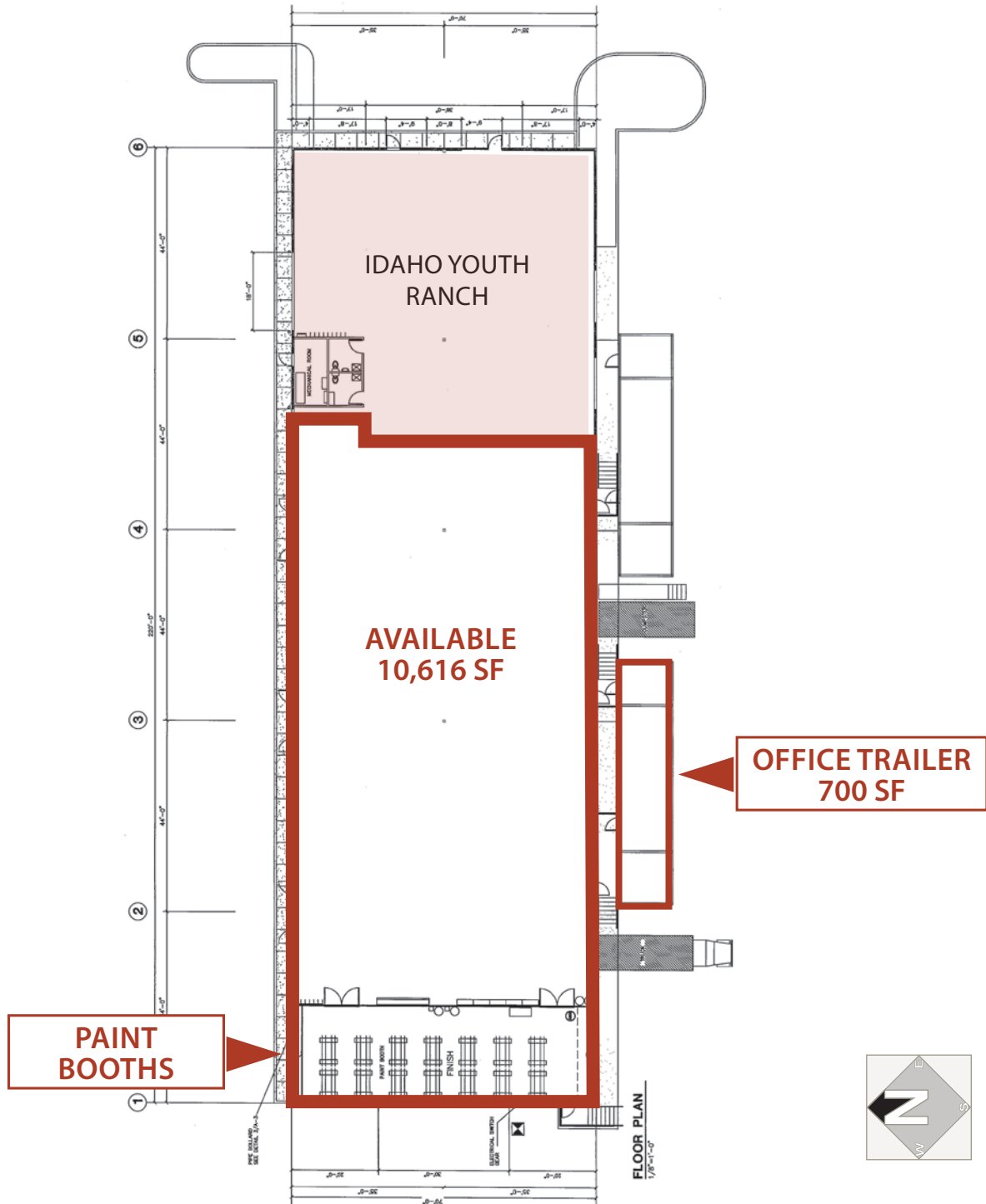


Sundance Building

2619 Sundance Road - Nampa, ID

INDUSTRIAL SPACE FOR LEASE

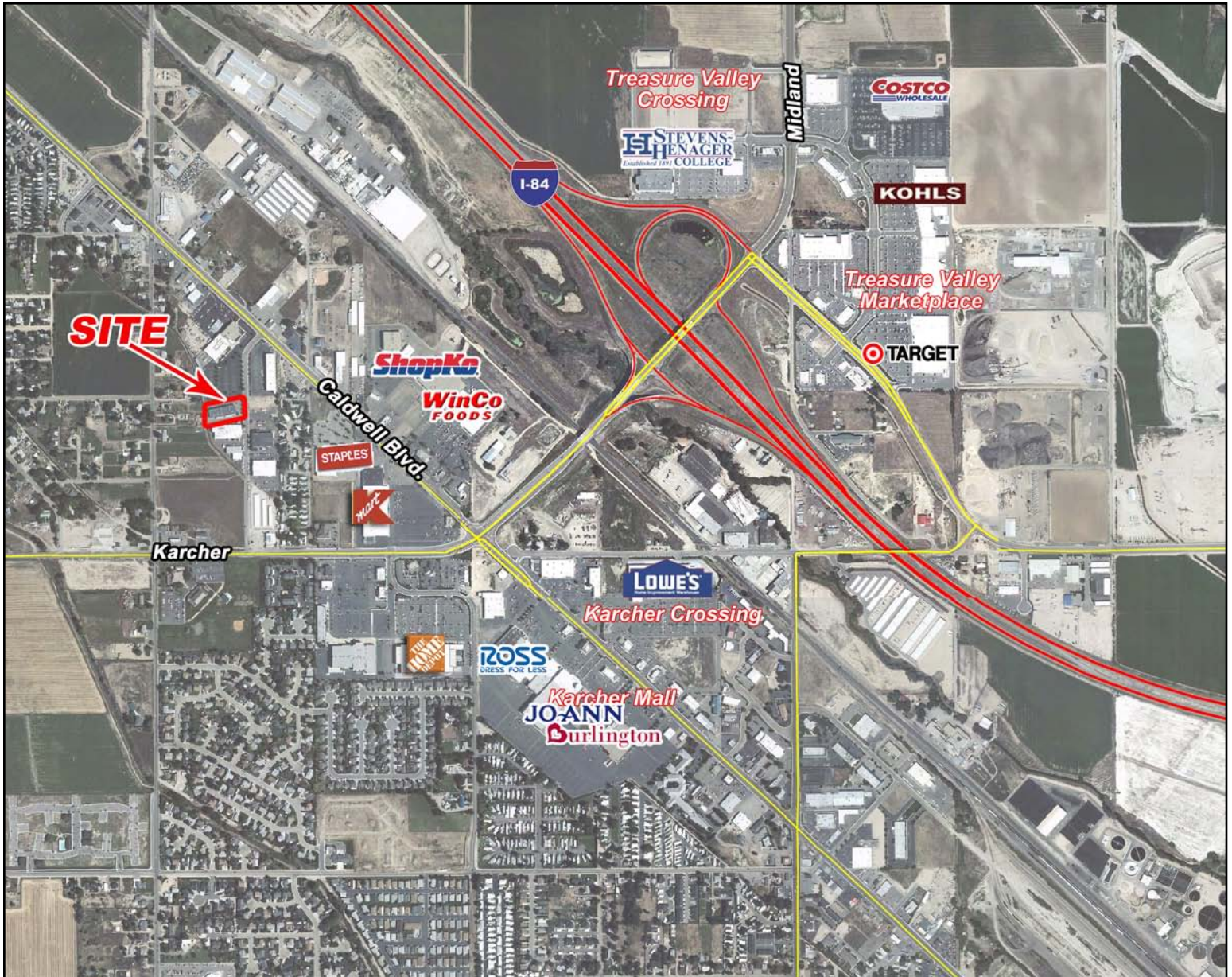
----- SUNDANCE ROAD -----



This information was obtained from sources believed reliable but cannot be guaranteed. Any opinions or estimates are used for example only.

Sundance Building

2619 Sundance Road - Nampa, ID
INDUSTRIAL SPACE FOR LEASE



This information was obtained from sources believed reliable but cannot be guaranteed. Any opinions or estimates are used for example only.