

Sundance Building

2603 Sundance Road - Nampa, ID
RETAIL / OFFICE / WHSE SPACE FOR LEASE



Property Information:

Submarket:	Nampa
Available:	Immediately
Bldg Type:	Industrial
Bldg Size:	24,544 ± SF
Available:	10,532 SF
Clear Height:	16' - 18'
Dock Doors:	2
Parking:	2:1,000
Lease Term:	3-5 Years
Lease Type:	NNN
NNN Costs:	\$0.12/SF

Listing Comments:

Located in Nampa near restaurants, health club, retail and banks.

Excellent access to Karcher Road and I-84.

Each suite has office space.

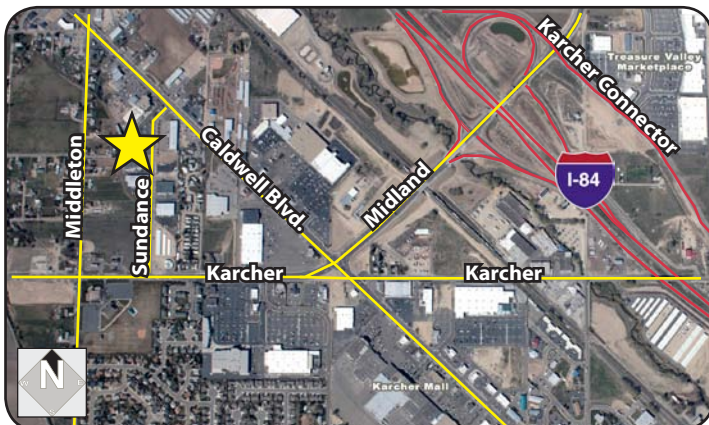
12' x 12' dock high doors.

Excellent retail/warehouse potential.

Signage on Sundance Road.

Available Space:

SPACE:	RSF:	RATE/SF:
Suite A	2,675 SF	\$0.45 + NNN
	Dock high door with 800 SF office.	
Suite D	2,776 SF	\$0.45 + NNN
Suite P	5,081 SF	\$0.45 + NNN
	Dock high & grade level doors with 600 SF office.	
Suites D & P	7,857 SF	\$0.45 + NNN



Contact:

Chris Pearson, SIOR

Ph: 208.947.0859

Fx: 208.947.0869

chris@tokcommercial.com

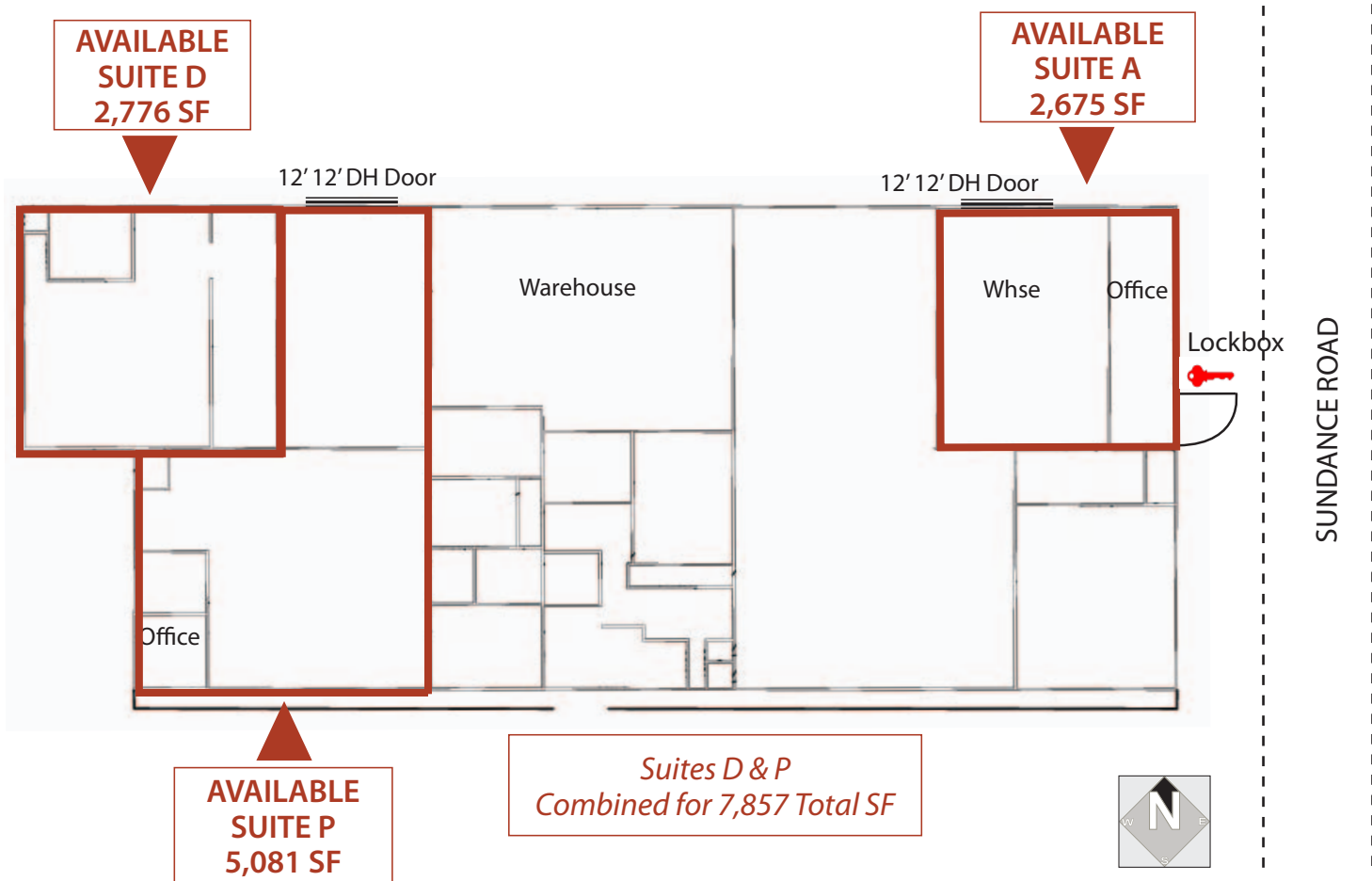
www.tokcommercial.com



Sundance Building

2603 Sundance Road - Nampa, ID

RETAIL / OFFICE / WHSE SPACE FOR LEASE



This information was obtained from sources believed reliable but cannot be guaranteed. Any opinions or estimates are used for example only.