

2525 Stokesberry

Meridian, ID

OFFICE SPACE FOR LEASE



Property Information:

Submarket: Meridian
Available: 30 days
Bldg Type: Office
Quality: Class A
Bldg Size: 3,000 SF
Divisible: Yes
of Floors: 1
Parking: 4:1000

Lease Terms:

Lease Term: 1-3 years
Lease Type: FLSVEJ
TI Allowance: Negotiable

Listing Comments:

Located within the Carol Professional Center.

Close proximity to restaurants, shops and services.

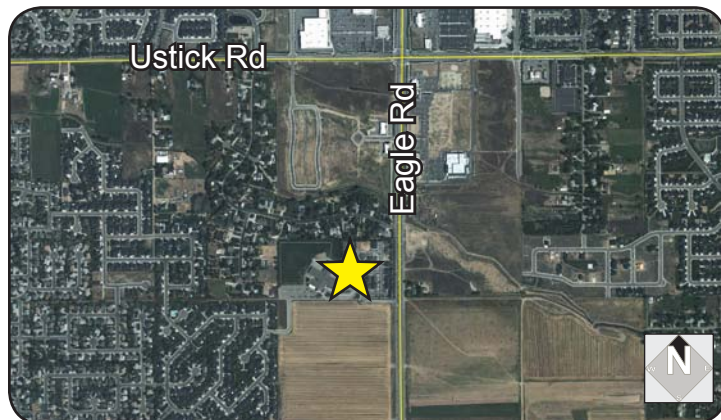
Convenient access to I-84.

Available Space:

SPACE:	RSF:	RATE:
Suite A	1,500 SF	\$14.00/SF

Suite A can be demised to 750 SF.

Contact agent for showing.



Contact:

Al Marino, SIOR

Ph: 208.947.0811

Fx: 208.947.0869

al@tokcommercial.com

www.tokcommercial.com

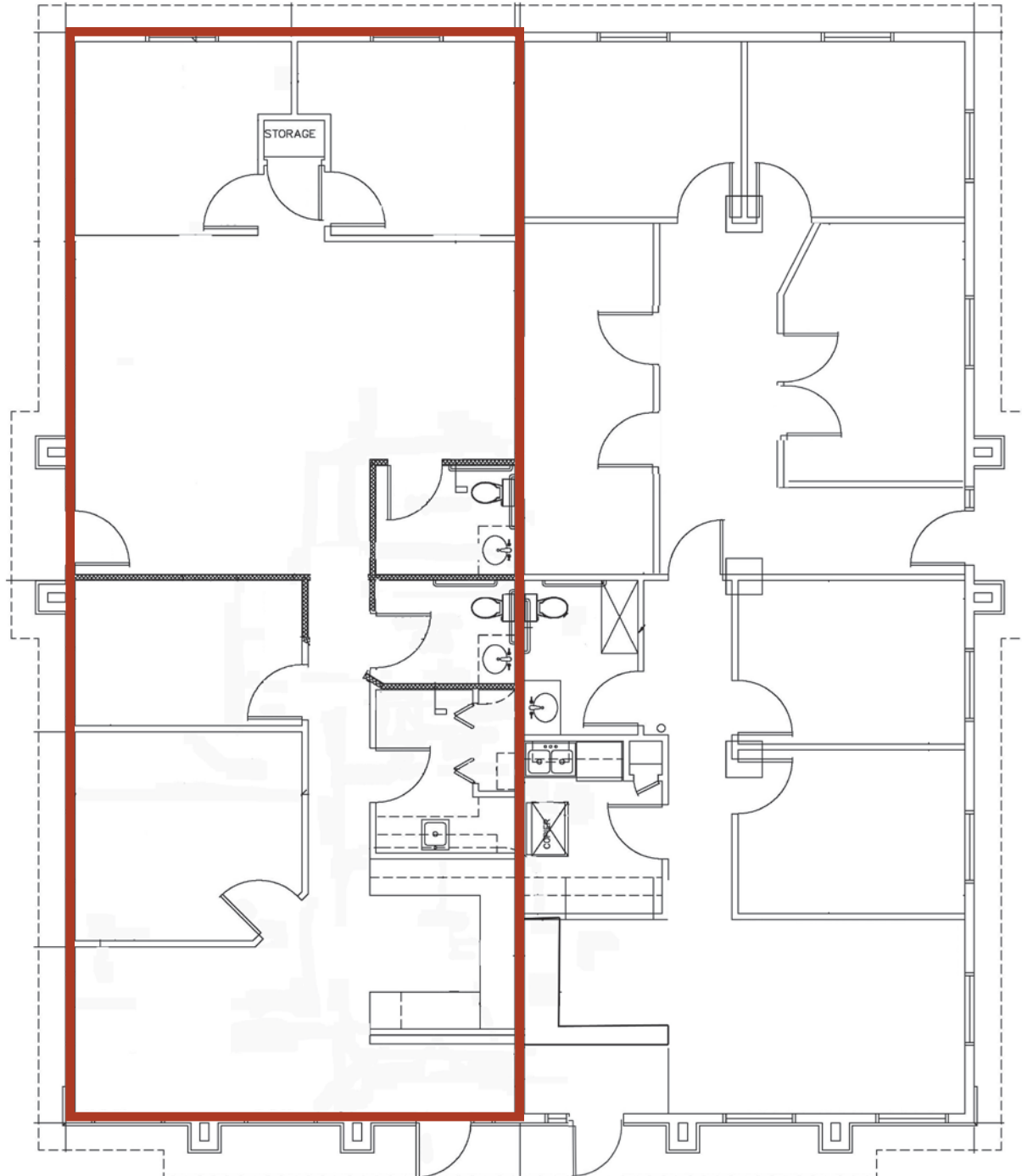


2525 Stokesberry

Meridian, ID

OFFICE SPACE FOR LEASE

Suite A
1,500 SF
Can be demised to 750 SF



This information was obtained from sources believed reliable but cannot be guaranteed. Any opinions or estimates are used for example only.