

Sundance Bldg & Yard

2500 - 2518 Sundance Road - Nampa, ID
OFFICE / WHSE SPACE FOR LEASE



Property Information:

Submarket:	Nampa
Available:	Immediately
Bldg Type:	Industrial
Bldg Size:	22,724 SF
Available:	2,250 SF
Clear Height:	16' - 18'
Dock Doors:	1
Grade Level Doors:	4
Parking:	3:1,000
Lease Term:	3-5 Years
Lease Type:	NNN
NNN Costs:	± \$0.13/SF

Listing Comments:

Located in Nampa near restaurants, health club, retail and banks.

Excellent access to Karcher Road and I-84.

Includes 225 SF office.

Dock high loading ramp.

Signage on Sundance Road.

Available Space:

SPACE:	RSF:	RATE/SF:
2516	Office 225 SF	
	Whse 2,015 SF	
	Total 2,240 SF	\$0.40 + NNN



Contact:

Chris Pearson, SIOR
 Ph: 208.947.0859
 Fx: 208.947.0869
 cpearson@tokcommercial.com
 www.tokcommercial.com

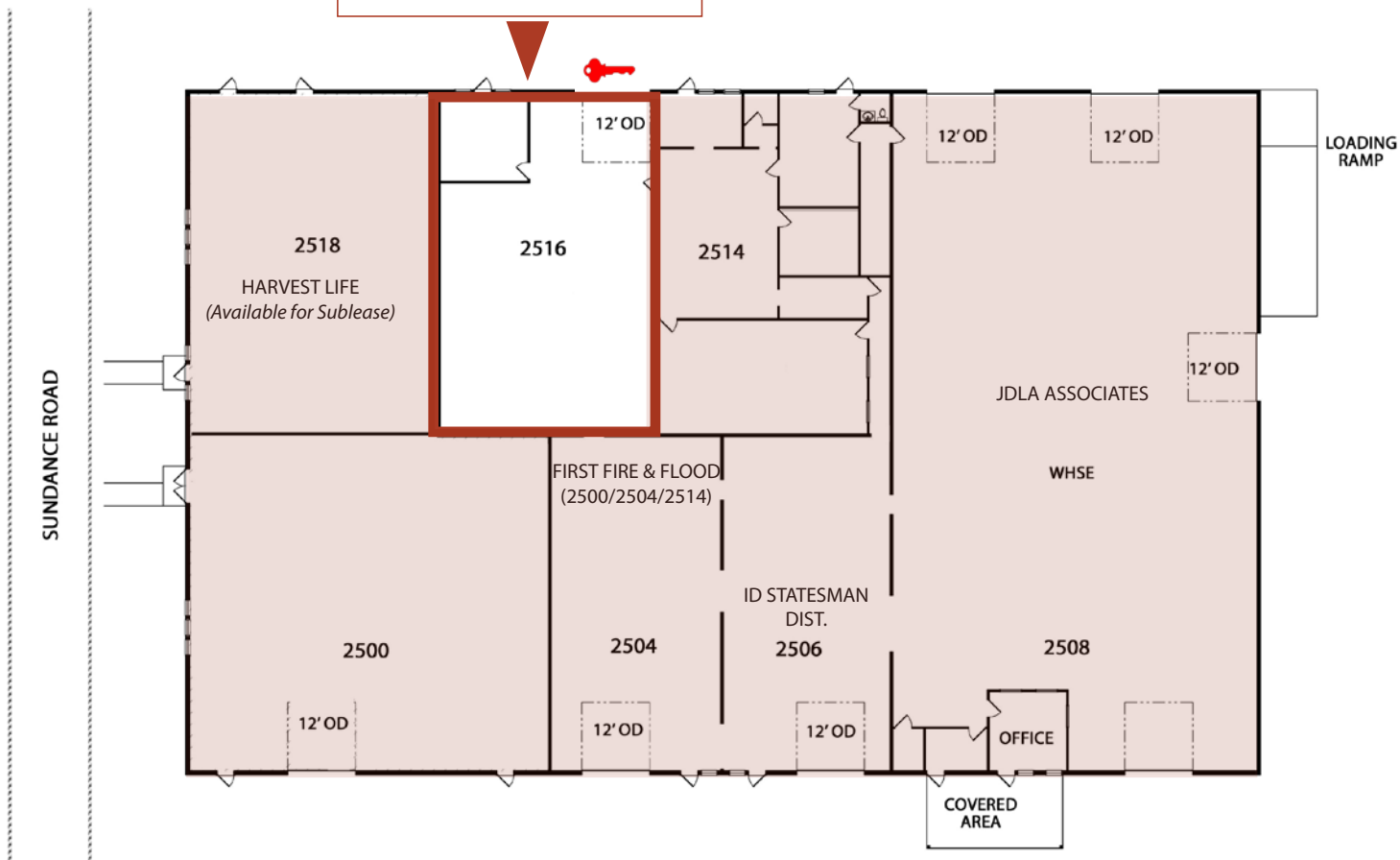


Sundance Bldg & Yard

2500 - 2518 Sundance Road - Nampa, ID

OFFICE / WHSE SPACE FOR LEASE

Suite 2516
2,240 SF with 225 SF
Office

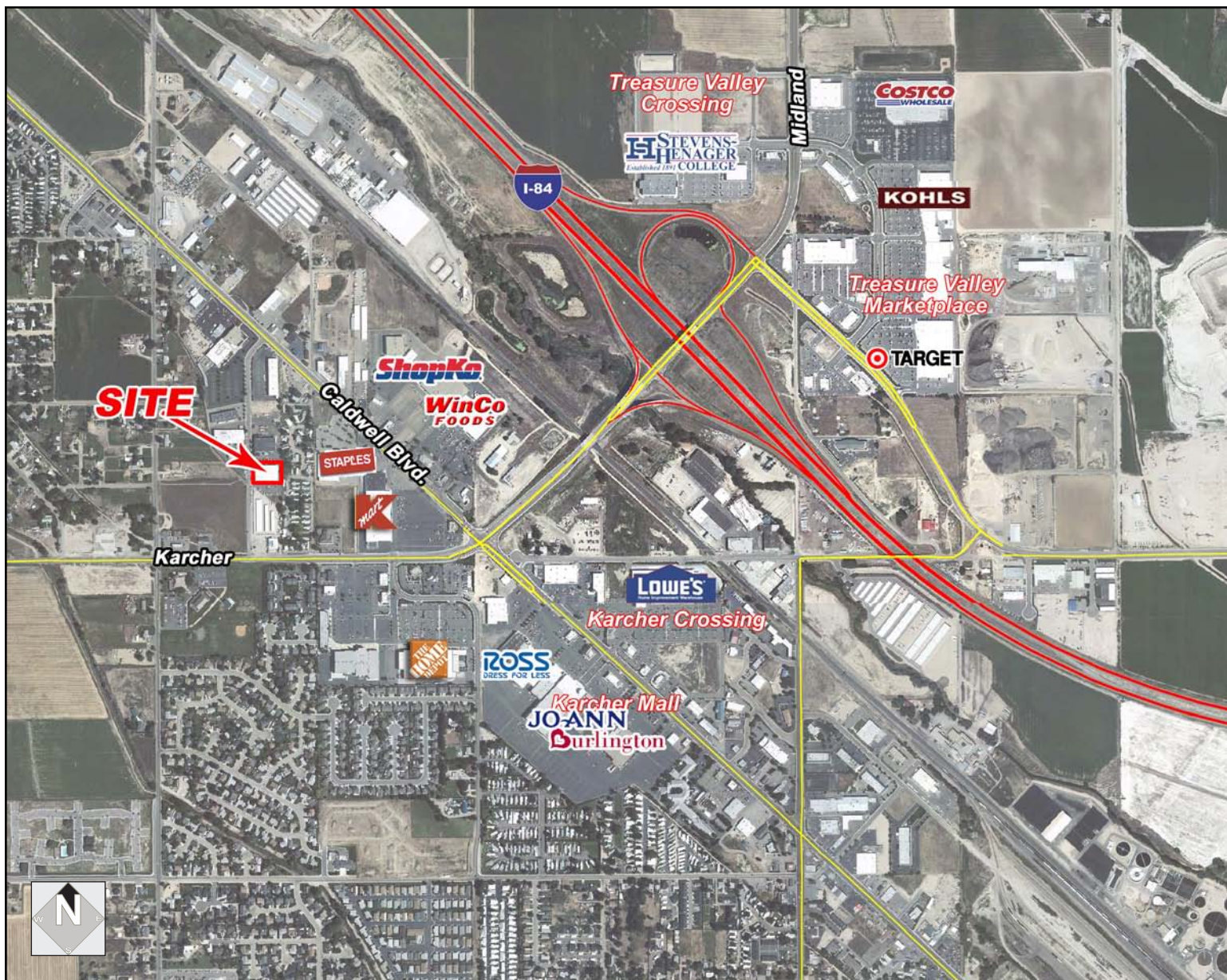


This information was obtained from sources believed reliable but cannot be guaranteed. Any opinions or estimates are used for example only.

Sundance Bldg & Yard

2500 - 2518 Sundance Road - Nampa, ID

OFFICE / WHSE SPACE FOR LEASE



This information was obtained from sources believed reliable but cannot be guaranteed. Any opinions or estimates are used for example only.