

232 S Whisperwood Way

Boise, ID

OFFICE SPACE FOR LEASE



Property Information:

Submarket: Central
Available: Immediately
Bldg Type: Office
Quality: Class A
Bldg Size: 13,223 SF
Divisible: No
of Floors: 1
Parking: Excellent

Lease Terms:

Lease Term: 3-5 years
Lease Type: FLSVEJ
TI Allowance: \$40/SF available

Listing Comments:

Great location with convenient access to I-184 connector.

Ideal space for medical, hospice or professional services.

New construction.

Design your own space layout!

Green Tenant improvement available.

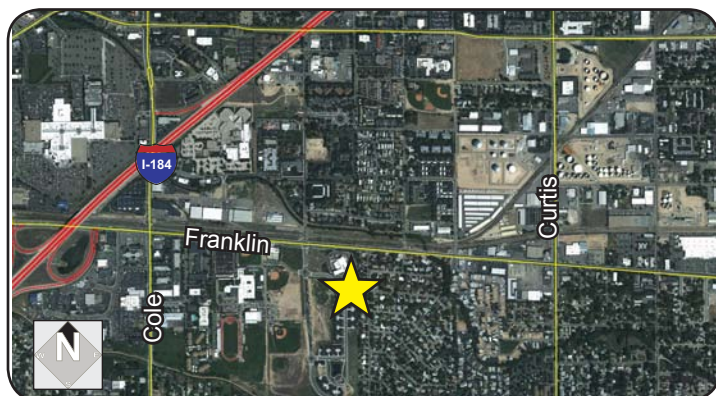
Green Building designed for LEED Gold Certification.

LEED Gold Benefits:

- High efficiency heating & cooling system
- Heat recovery units and heat exchangers
- Daylighting / lighting control system
- Improved air quality
- Recycling program
- Recycled content building materials
- Individual room heating / cooling control

Available Space:

SPACE:	RSF:	RATE:
232 Whisperwood	2,443 SF	\$16.50/SF



Contact:

Greg Gaddis

Ph: 208.947.0827

Fx: 208.947.0869

greg@tokcommercial.com

www.tokcommercial.com

Lenny Nelson

Ph: 208.947.0806

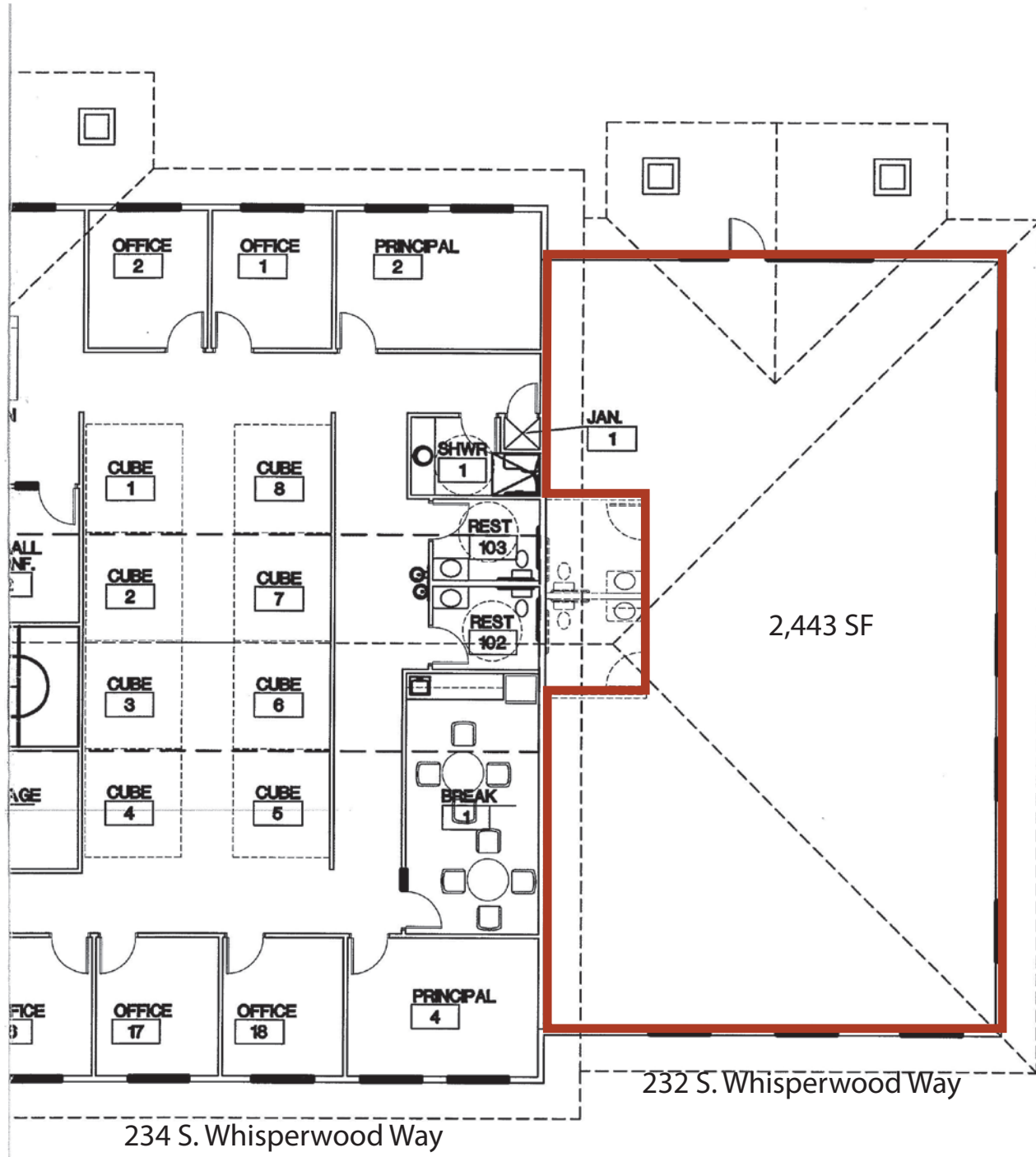
Fx: 208.947.0869

lenny@tokcommercial.com

www.tokcommercial.com

232 S Whisperwood Way

Boise, ID
OFFICE SPACE FOR LEASE



This information was obtained from sources believed reliable but cannot be guaranteed. Any opinions or estimates are used for example only.