

1920-1928 State Street

1920, 1924, & 1928 State St., Boise, ID 83702

RE-DEVELOPMENT LAND FOR SALE



Listing Comments:

- Potential for Commercial Development
- 24,315 VPD on State Street
- Zoned C-2 (General Commercial)
- Great Visibility in an Established Part of Boise
- Approximately 150' of Frontage on State Street

Available:

Size: 0.41 ± Acres
Price: \$180,000.00
Zoning: C-2
Utilities: To Site

Contact:

Lenny Nelson

Ph: 208.947.0806

Fx: 208.947.0869

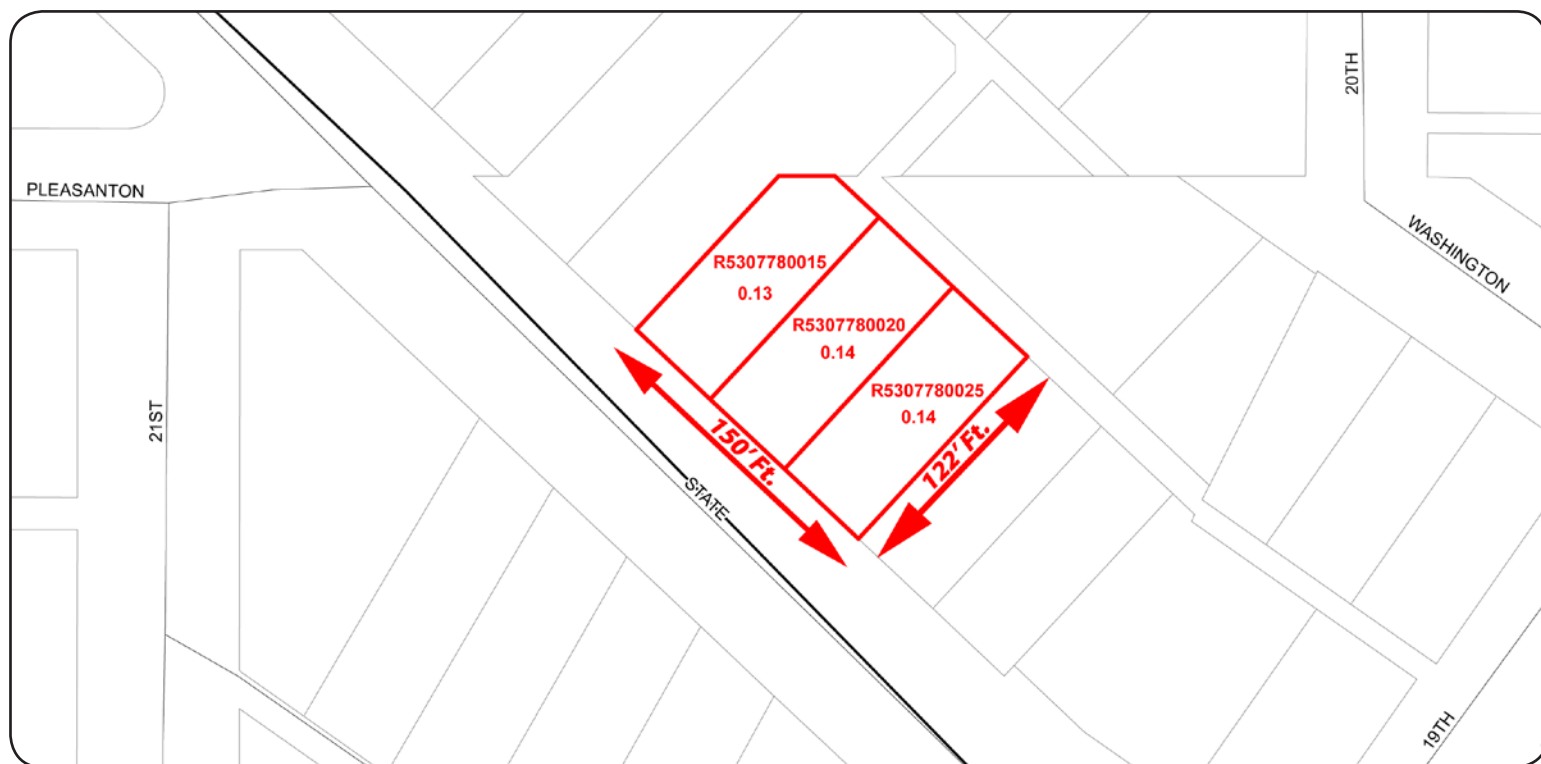
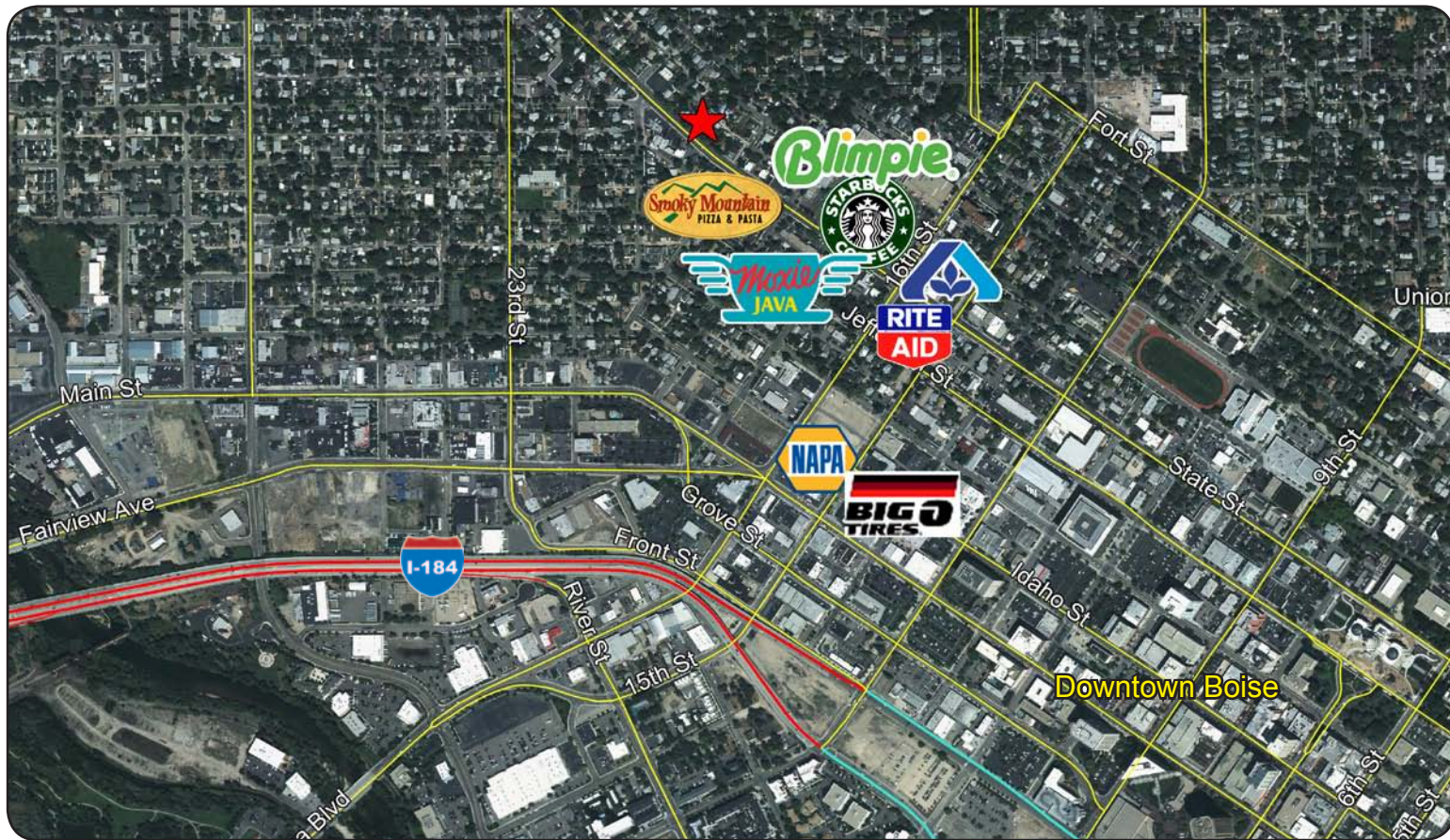
lenny@tokcommercial.com

www.tokcommercial.com

1920-1928 State Street

1920, 1924, & 1928 State St., Boise, ID 83702

RE-DEVELOPMENT LAND FOR SALE



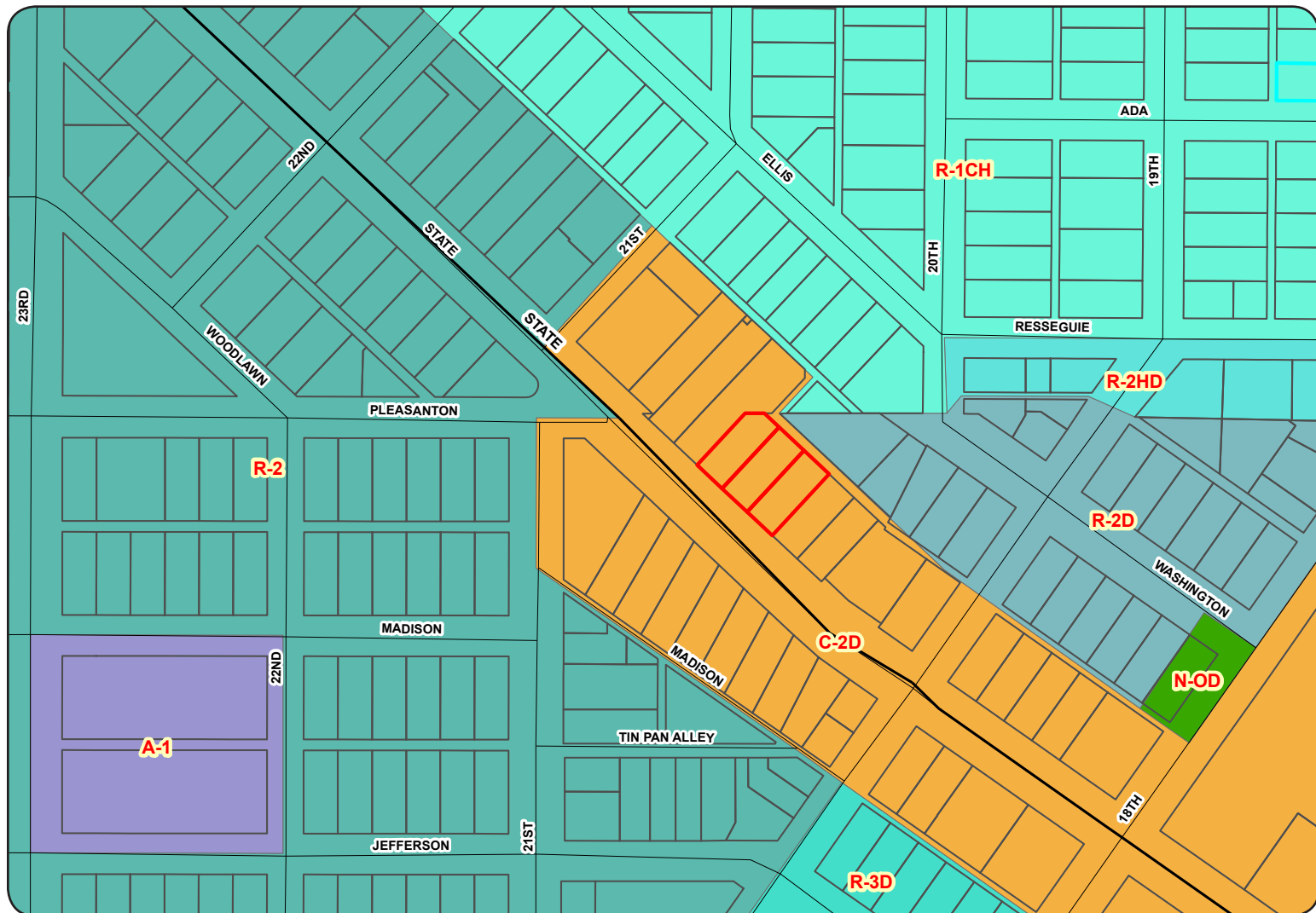
This information was obtained from sources believed reliable but cannot be guaranteed. Any opinions or estimates are used for example only.

1920-1928 State Street

1920, 1924, & 1928 State St., Boise, ID 83702

RE-DEVELOPMENT LAND FOR SALE

ZONING MAP



This information was obtained from sources believed reliable but cannot be guaranteed. Any opinions or estimates are used for example only.