

# 1900 Lanark

Meridian, ID  
**INDUSTRIAL BUILDING FOR LEASE**



**Property Information:**

<b>Submarket:</b>	Meridian
<b>Available:</b>	Immediately
<b>Bldg Type:</b>	Industrial
<b>Bldg Size:</b>	11,520 SF
<b>Excess Land:</b>	60,177 SF (Yard)
<b>Dock:</b>	1
<b>Grade Level:</b>	4
<b>Completed:</b>	2005
<b># of Floors:</b>	Two
<b>Parking:</b>	Ample

**Listing Comments:**

- Great Meridian location.
- Class A building with yard.
- Drive-thru roll-up doors.
- Racking in place. Can be leased or removed.
- Loading dock in the yard.

**Available Space:**

SPACE:	RSF:	RATE/SF:	MONTHLY:
1st Floor Office	1,800 SF		
Warehouse	<u>7,920 SF</u>		
Total Ground Floor	9,720 SF		
2nd Floor Office	<u>1,800 SF</u>		
Total Bldg Size	11,520 SF	\$0.45	\$5,184.00
Yard	60,177 SF	\$0.03	\$1,805.31



**Contact:**

**Dan Minnaert, SIOR, CCIM**

Ph: 208.947.0845  
 Fx: 208.947.0869  
 dan@tokcommercial.com  
 www.tokcommercial.com

**Devin Pierce**

Ph: 208.947.0850  
 Fx: 208.947.0869  
 devin@tokcommercial.com  
 www.tokcommercial.com



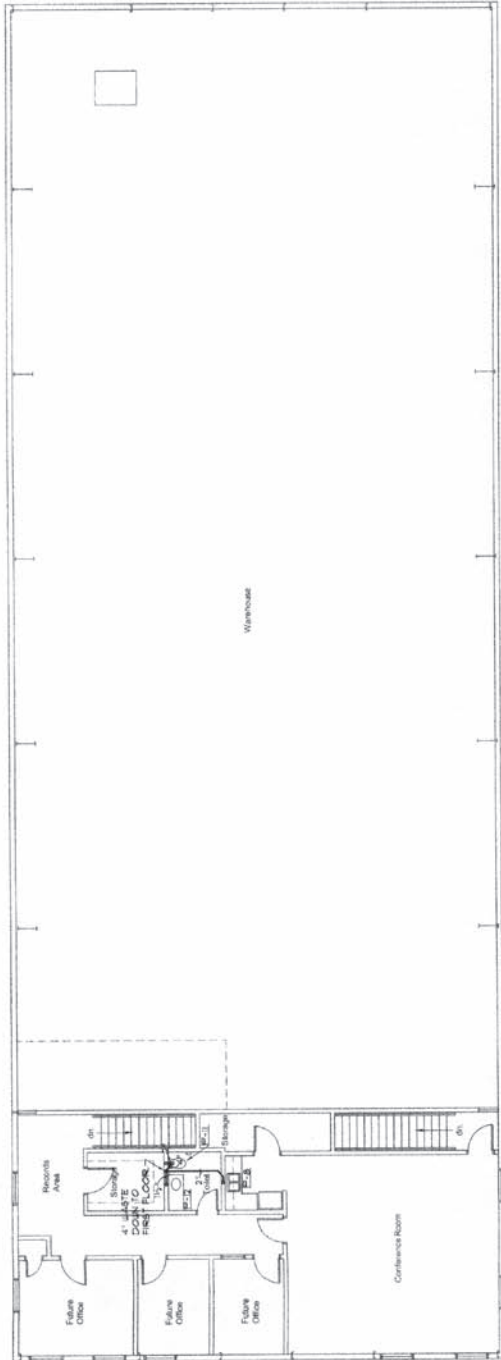
# 1900 Lanark

Meridian, ID

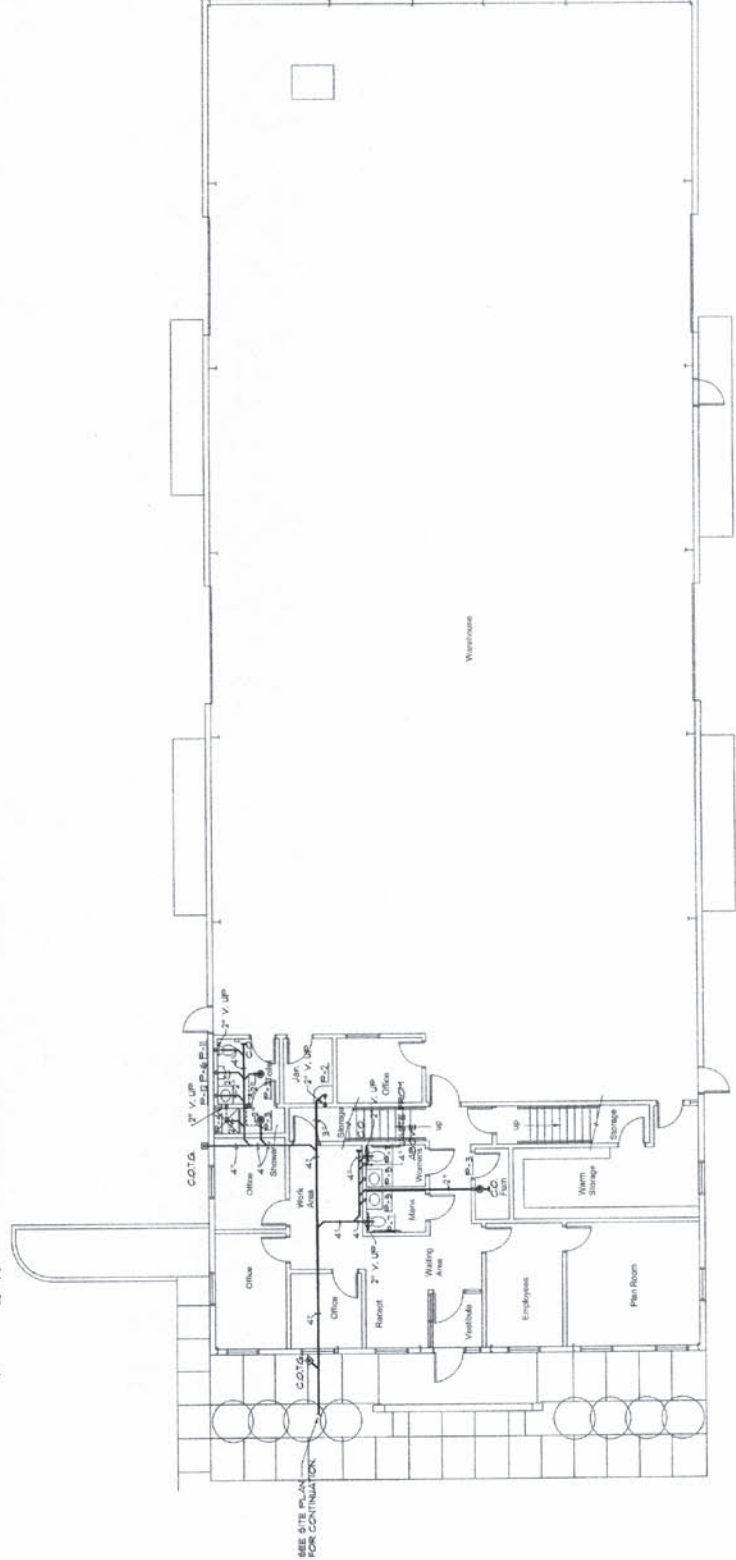
INDUSTRIAL BUILDING FOR LEASE

## SECOND FLOOR

## FIRST FLOOR



SECOND FLOOR WASTE PLAN  
1/8" = 1'-0"



FIRST FLOOR WASTE PLAN  
1/8" = 1'-0"

This information was obtained from sources believed reliable but cannot be guaranteed. Any opinions or estimates are used for example only.