

# 1810 S Eagle Rd

Meridian, ID

**OFFICE SPACE FOR LEASE**



### Property Information:

**Submarket:** South Meridian  
**Available:** Immediately  
**Bldg Type:** Office  
**Quality:** Class A  
**Divisible:** No  
**# of Floors:** 1  
**Parking:** 4:1000

### Lease Terms:

**Lease Term:** Negotiable  
**Lease Type:** FLSVEJ  
**TI Allowance:** Negotiable

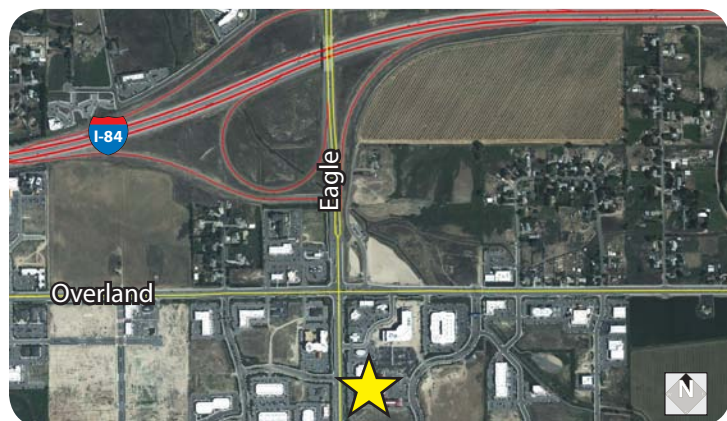
### Listing Comments:

Located in the Silverstone Corporate Center.  
 Easy access to I-84 at Eagle Road.  
 Professional business park setting.  
 Adjacent to restaurants, hotels and major employers.  
 Building signage available.  
 Tenant's will have access to Silverstone's corporate events center and conference room.

### Available Space:

SPACE:	RSF:	RATE
Suite A	3,505 SF	\$13.50/SF (Year 1)
Suite B	2,940 SF	\$13.50/SF (Year 1)

Suites can be combined for 6,445 SF.



### Contact:

**Mike Greene, CCIM**

Ph: 208.947.0835

Fx: 208.947.0869

mikeg@tokcommercial.com

www.tokcommercial.com



# 1810 S Eagle Rd

Meridian, ID

OFFICE SPACE FOR LEASE

Suites can be  
combined for 6,445 SF



Suite B  
2,940 SF

Suite A  
3,505 SF

This information was obtained from sources believed reliable but cannot be guaranteed. Any opinions or estimates are used for example only.