

# 3 DEVELOPMENT LOTS - CHERRY LN.

1440, 1516, & 1528 W. CHERRY LANE, MERIDIAN, ID 83646

## DEVELOPMENT LOTS FOR SALE



**THORNTON OLIVER KELLER**  
COMMERCIAL REAL ESTATE

*Experience Results.*

### CONTACT:

**Michael J. Ballantyne, CCIM**

Ph: 208.947.0831

Fx: 208.947.0869

mjb@tokcommercial.com

www.tokre.com

**Lenny Nelson**

Ph: 208.947.0806

Fx: 208.947.0869

lenny@tokcommercial.com

www.tokre.com



### PROPERTY INFORMATION:

**Submarket:** Meridian  
**Available:** Immediately  
**Lot Sizes:** See Next Page  
**Zoning:** C-C

### SALE TERMS:

**Sale Price:** Lot 1: \$ 89,000.00  
Lot 2: \$112,000.00  
Lot 3: \$139,000.00

**TOTAL PRICE: \$340,000.00**

### LISTING COMMENTS:

- Excellent Retail Location at Major Meridian Intersection
- 29,747 Vehicles Per Day (Cherry & Linder Intersection)
- Buy All or One Lot

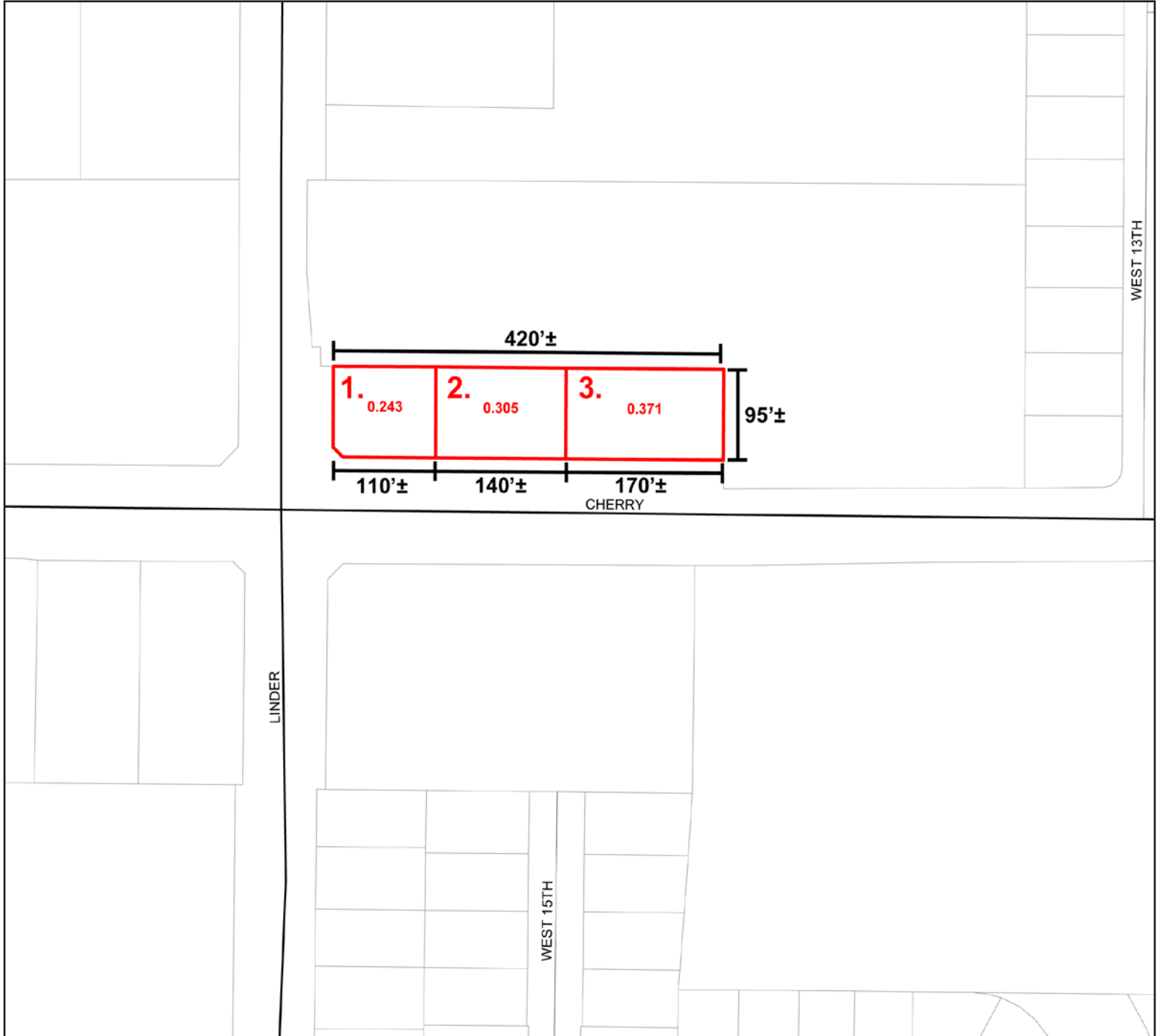
(04/19/11) This information was obtained from sources believed reliable but cannot be guaranteed. Any opinions or estimates are used for example only.

# 3 DEVELOPMENT LOTS - CHERRY LN.

1440, 1516, & 1528 W. CHERRY LANE, MERIDIAN, ID 83646

## DEVELOPMENT LOTS FOR SALE

LOT:	SIZE:	\$/SF:	PRICE:
1	0.243 AC	\$8.41	\$ 89,000.00
2	0.305 AC	\$8.43	\$112,000.00
3	0.371 AC	\$8.60	\$139,000.00
<b>TOTAL:</b>	<b>0.919 AC</b>		<b>\$340,000.00</b>

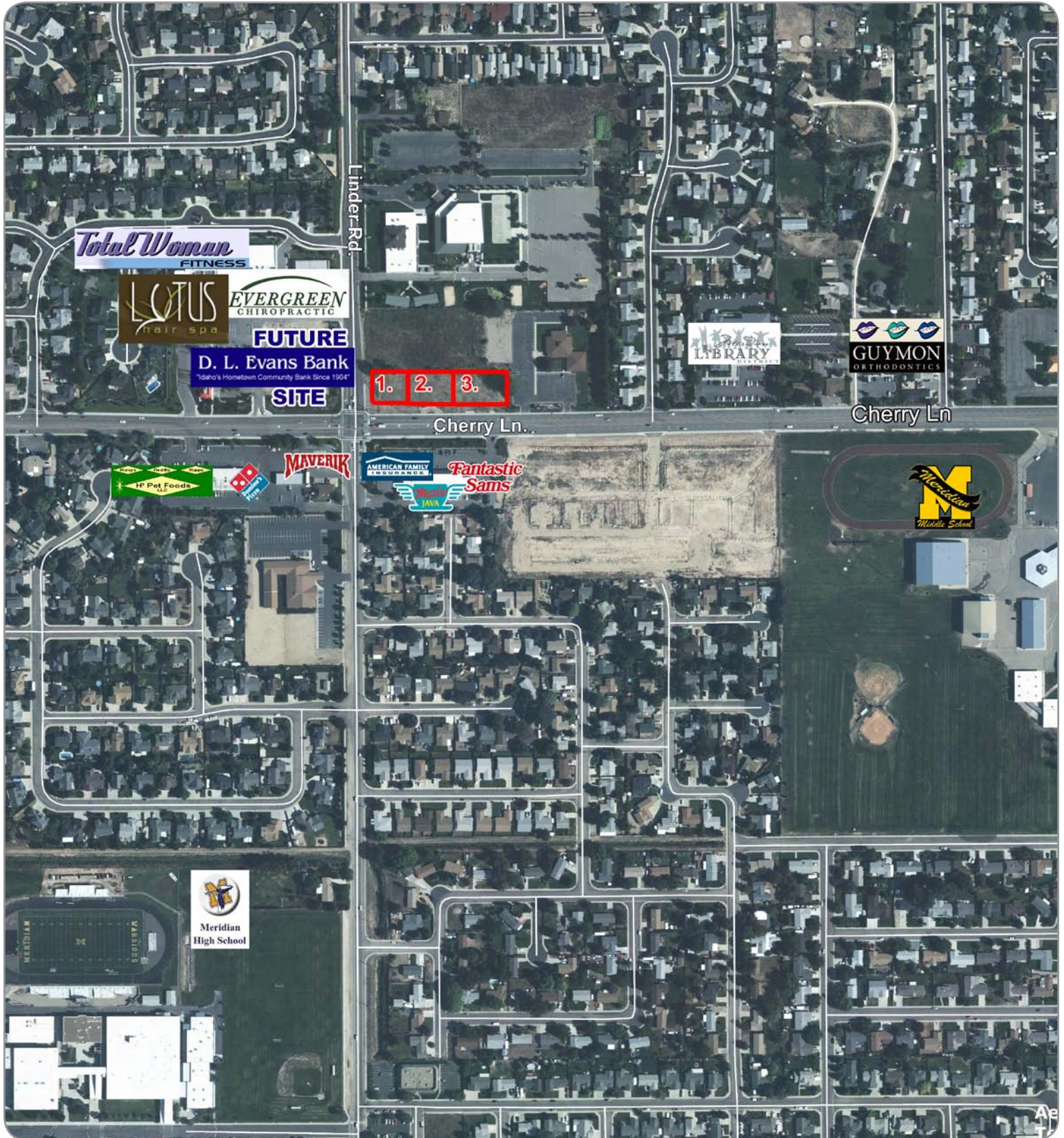


This information was obtained from sources believed reliable but cannot be guaranteed. Any opinions or estimates are used for example only.

# 3 DEVELOPMENT LOTS - CHERRY LN.

1440, 1516, & 1528 W. CHERRY LANE, MERIDIAN, ID 83646

## DEVELOPMENT LOTS FOR SALE



This information was obtained from sources believed reliable but cannot be guaranteed. Any opinions or estimates are used for example only.