

# 1102 Franklin Road

Nampa, ID

INDUSTRIAL BUILDING FOR SALE



## Property Information:

<b>Submarket:</b>	Nampa - Caldwell Blvd.
<b>Bldg Type:</b>	Industrial
<b>Bldg Size:</b>	34,500 SF + 25,000 SF Out-building
<b>Divisible:</b>	No
<b>Parcel Size:</b>	7.00 Acres
<b>Yard Size:</b>	3.00 Acres
<b>Dock Doors:</b>	Yes
<b>Grade Level Doors:</b>	Yes
<b>Clear Height:</b>	18'
<b>Zoning:</b>	M-1D
<b>Parking:</b>	Ample

## Listing Comments:

Quality construction.

Class A location.

Excess land for yard space.

## Sale Terms:

**Sale Price:** \$1,800,000

## Contact:

**Dan Minnaert, SIOR, CCIM**

Ph: 208.947.0845

Fx: 208.947.0869

dan@tokcommercial.com

www.tokcommercial.com

**Devin Pierce**

Ph: 208.947.0850

Fx: 208.947.0869

devin@tokcommercial.com

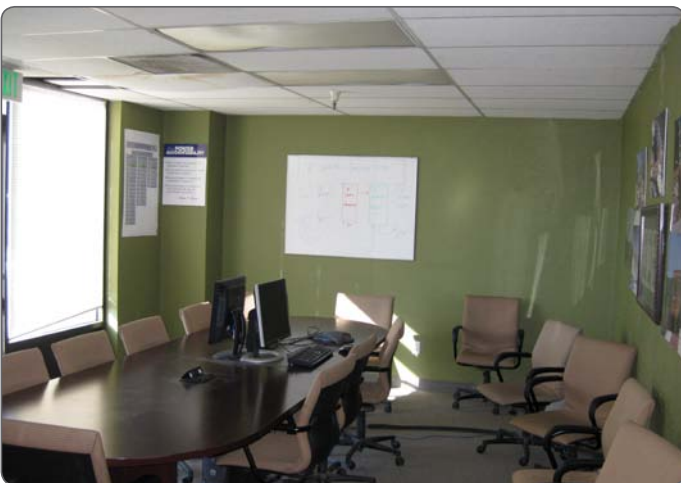
www.tokcommercial.com



# 1102 Franklin Road

Nampa, ID

INDUSTRIAL BUILDING FOR SALE

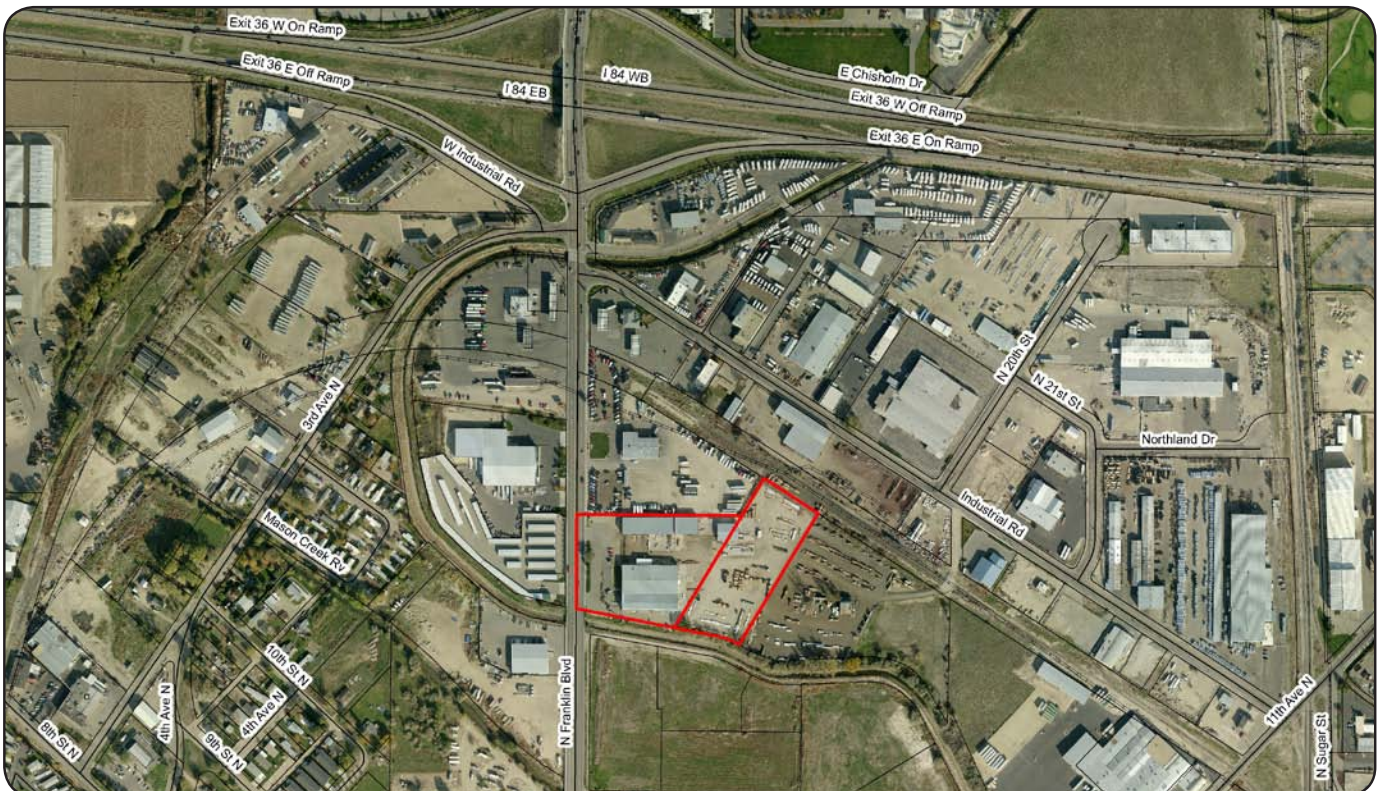


This information was obtained from sources believed reliable but cannot be guaranteed. Any opinions or estimates are used for example only.

# 1102 Franklin Road

Nampa, ID

INDUSTRIAL BUILDING FOR SALE



This information was obtained from sources believed reliable but cannot be guaranteed. Any opinions or estimates are used for example only.