

1020 Hickory

Meridian, ID

OFFICE SPACE FOR LEASE



Property Information:

Submarket: Meridian
Available: Immediately
Bldg Type: Office
Quality: Class A
Bldg Size: 8,998 SF
Divisible: No
of Floors: 1
Parking: 4:1000

Lease Terms:

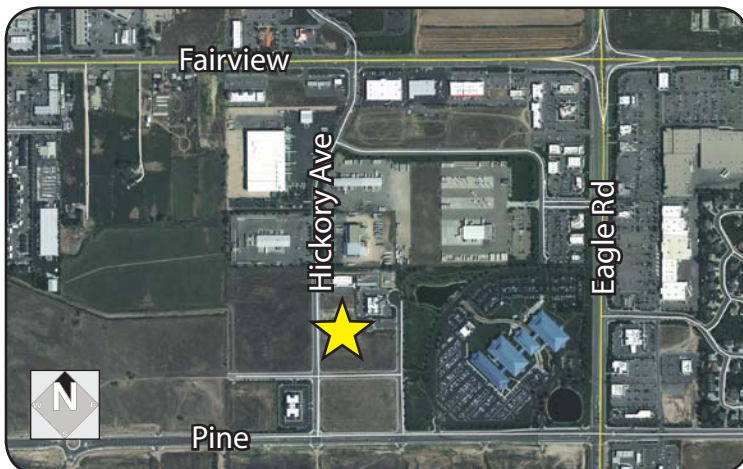
Lease Term: 3-5 years preferred
Lease Type: FLSVEJ
TI Allowance: Negotiable

Listing Comments:

- Built out space.
- Well located, close to a variety of amenities.
- High-end finishes in common area and restrooms.
- Covered client drop-off area.
- Easy access to I-84, Fairview and Eagle Road.

Available Space:

SPACE:	RSF:	RATE:
Suite 100	2,639 SF	\$15.00/SF



Contact:

Mike Greene, CCIM

Ph: 208.947.0835

Fx: 208.947.0869

mikeg@tokcommercial.com

www.tokcommercial.com

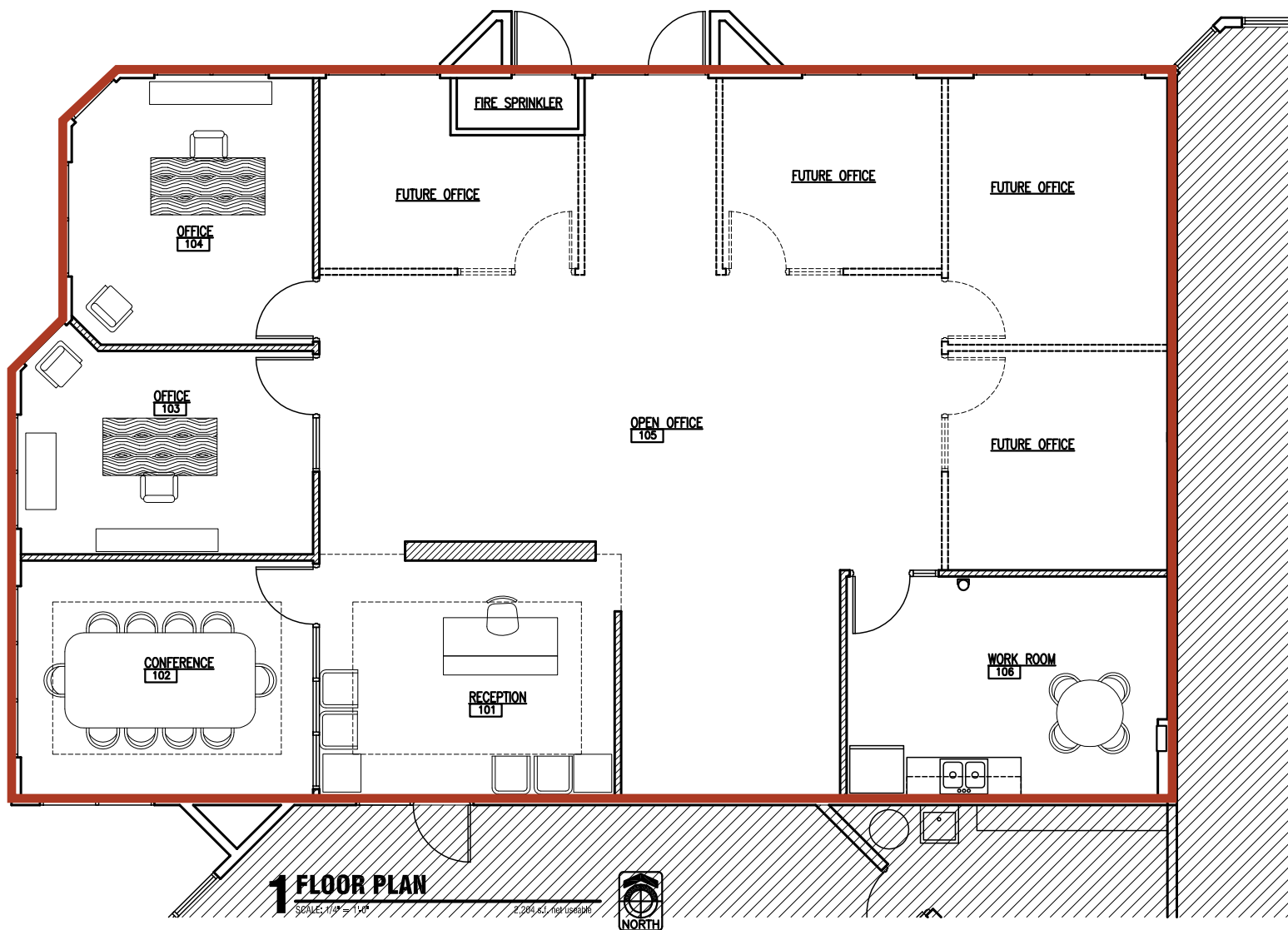


1020 Hickory

Meridian, ID

OFFICE SPACE FOR LEASE

Suite 100
2,639 SF



This information was obtained from sources believed reliable but cannot be guaranteed. Any opinions or estimates are used for example only.